



PROFESSIONAL TEACHERS' COUNCIL NSW

Building capacity to support teacher quality



20 ANNUAL 16 REPORT

Cover image –

Giorgi Tamsin Jardine

Frensham School

Meandering on the Main Road ... A Journey Through the Monaro

Painting, Oil on MDF

My main intention in my work is to reflect the unique and beautiful visual experience of travelling through the Monaro region as it represents an important part of my life. I wanted to capture the continuous rolling hills in the expanse and emptiness of the landscape as they are the defining character of the Monaro. The curved line that runs through the centre of the artwork ties the panels together aesthetically and conceptually. It represents the Monaro Highway, which connects the most important places in my life and is where I took my photographs for my paintings.

Our thanks to the Board of Studies Teaching and Educational Standards (BOSTES) for the use of this ArtExpress image



THIRTY THIRD ANNUAL REPORT
OF THE
PROFESSIONAL TEACHERS' COUNCIL
NEW SOUTH WALES

October 2016

Building capacity to support teacher quality

CONTENTS

Statement of Purpose	4
Member Associations	4
PTC NSW Activities Map	5
President's Report	7
Directors' Report	13
Financial Statements	21
Directors' Declaration	23
Statement of Comprehensive Income for the Year Ended 30 June 2016	25
Statement of Financial Position as at 30 June 2016	26
Statement of Cash Flows for the Year Ended 30 June 2016	27
Statement of Changes in Equity for the Year Ended 30 June 2016	28
Notes to the Financial Statements for the Year Ended 30 June 2016	29
Auditor's Independence Declaration	36
Independent Auditor's Report	37
Accountant's Report to the Members	39
Income & Expenditure Statement for the Year Ended 30 June 2016	40
Treasurer's Report	45
External Committee and PTC NSW Board Subcommittee Reports	49

STATEMENT OF PURPOSE

The Professional Teachers' Council of NSW provides leadership to advance the teaching profession.

In order to achieve our purpose, we will:

1. Ensure quality services for member associations
2. Provide effective governance
3. Develop and advocate position statements
4. Implement effective communication strategies
5. Manage strategic projects

MEMBER ASSOCIATIONS

Aboriginal Studies Association
Association for Studies of Religion
Australian Council for Health, Physical Education and Recreation (NSW)
Australian Psychologists & Counsellors in Schools
Australian Society for Music Education (Inc) NSW Chapter
Australian Teachers of Media (NSW)
Careers Advisers Association of NSW Inc
Chinese Language Teachers' Association
Classical Languages Teachers' Association
Drama NSW
Economics and Business Educators NSW
English Association
English Teachers Association NSW
Geography Teachers' Association of NSW Inc
Gifted and Talented Secondary Teachers' Association
History Teachers' Association of NSW
Home Economics Institute of Australia (NSW Division)
ICT Educators of New South Wales
Institute of Industrial Arts Technology Education
Legal Studies Association of NSW Inc
Marine Teachers' Association of NSW Inc

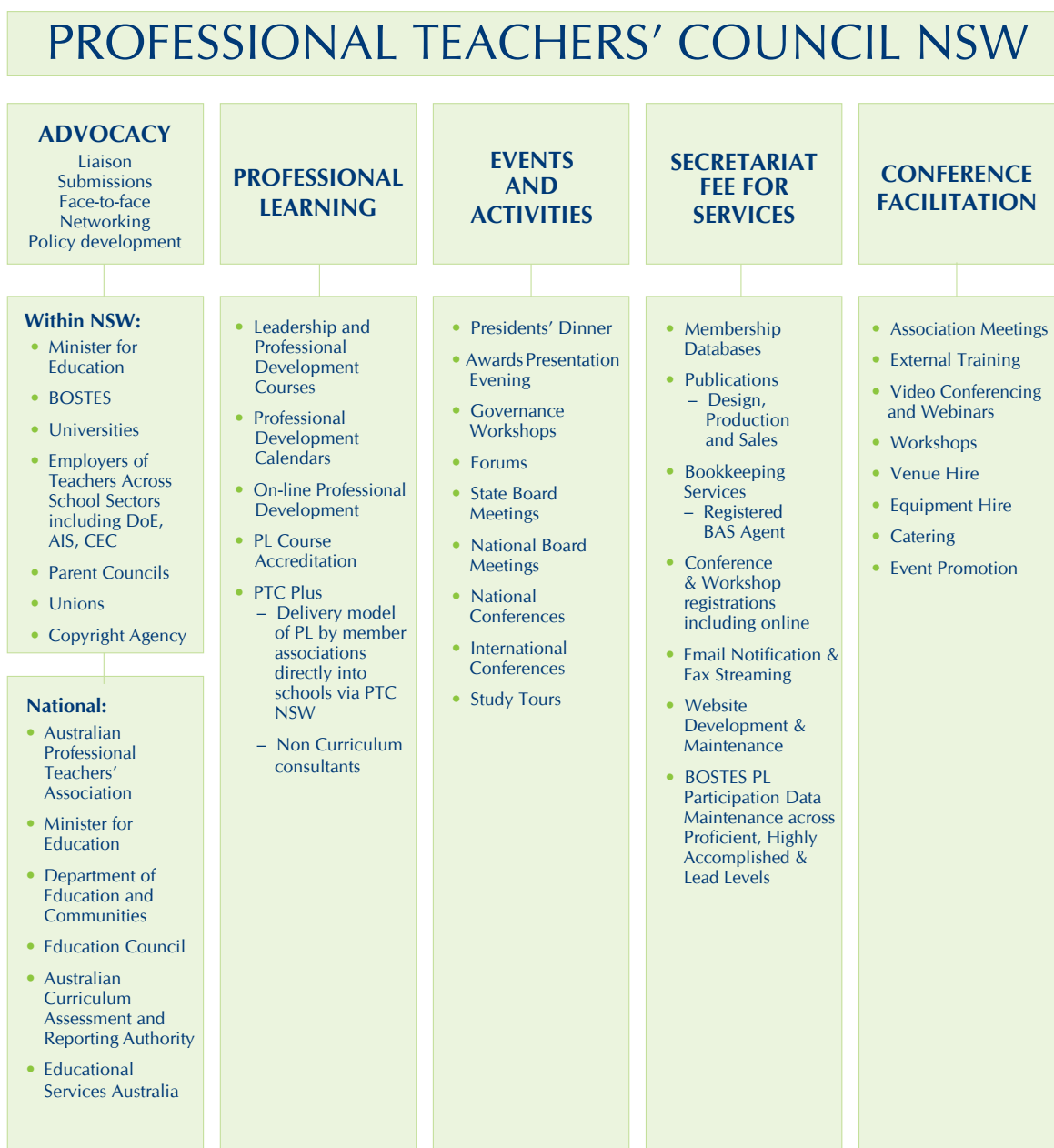
Mathematical Association of NSW Inc
Metropolitan East Social Science Teachers' Association
Modern Languages Teachers' Association NSW
NSW Association of Agriculture Teachers Inc
NSW Association of French Teachers
NSW PDHPE Teachers' Association
Orff Schulwerk Association of NSW
Primary Teachers' Network Inc
Professional Association for Learning Support Inc
Professional Casual Teachers' Association NSW
Science Teachers' Association of NSW Inc
Society and Culture Association of NSW
Student Welfare & Personal Development Association of NSW
Technology Educators' Association of NSW Inc
Visual Arts & Design Educators' Association (NSW)

AFFILIATED ORGANISATIONS

Australian Band & Orchestra Directors' Association
Australian Literacy Educators' Association NSW
Kodály Music Education Institute of Australia (NSW)
NSW Institute for Educational Research
School Administrative & Support Staff Professional Association (NSW)

PTC NSW ACTIVITIES MAP

The Professional Teachers' Council NSW (PTC NSW) is the peak body for professional teachers' associations in NSW with 42 member associations. Established in 1973 it represents teachers at all levels of the education system, early childhood to tertiary. PTC NSW represents both government and non-government sectors, in all key learning, cross-curricula and leadership areas. PTC NSW provides an independent and non-partisan forum for the discussion of education policy and has a commitment to the professional development of teachers and to enhancing the professionalism of teachers and the quality of education in NSW.



Page 7 image –
2012 HSC Major Work by R Rego

Our thanks to the Board of Studies Teaching and Educational Standards (BOSTES) for the use of this ArtExpress image

PRESIDENT'S REPORT



For the Year Ended 30 June 2016



PRESIDENT'S REPORT 2016

DR DENIS MOOTZ

It has been another eventful and challenging year for the Board of Directors of the Professional Teachers' Council NSW Ltd. The highlight of 2016 was the acceptance by Professor The Honourable Dame Marie Bashir AD CVO of an invitation to become the inaugural patron of PTC NSW Ltd. We are both excited and proud to have an association with such a stalwart supporter of education.

In 2016 we continued to work with the Office of the Board of Studies, Teaching and Educational Standards NSW (BOSTES). We contributed an individual response on behalf of our members by invitation of the Chair of the Review Committee to the official review. We hope to work closely with the newly legislated Educational Standards Authority (acronym yet to be coined!) to continue our efforts to support the implementation of the *Great Teaching and Inspired Learning* initiative, particularly in the provision of professional learning for teachers under GTIL 8.1 and GTIL 16.4. The imminent implementation of GTIL 16.4 is still potentially the most challenging development in teacher education in many years. The PTC NSW Directors wish to acknowledge the continuing support and commitment of BOSTES President Tom Alegounarias for the concept of "teacher driven, teacher designed and teacher delivered" Professional Learning in NSW.

The PTC NSW continued its efforts to broker co-operation between BOSTES, the NSW Department of Education, the Catholic Education Commission and the Independent Education Union to establish a conduit for cross-sectoral Professional Learning that will offer economies of scale and minimise duplication and waste of resources, allowing us to both deliver affordable and relevant Professional Learning for teachers, and maintain the primary role of affiliated PTAs as GTIL 16.4 becomes a reality for all teachers in NSW. The re-organisation of the NSW Department of Education has slowed progress somewhat but we are optimistic after recent meetings that now things have settled down, we can proceed towards a positive result for PTC NSW and the teachers of NSW.

It is with much pleasure and satisfaction that PTC NSW Directors can report that our 2015 secretariat initiative for non-discipline based Professional Learning, *PTCplus*, has proven to be a success in 2016. An encouraging number of schools, both Primary and Secondary, have taken up the opportunity to plan their annual Professional Learning program in consultation with PTC NSW. This allows them access to a team of consultants, and when appropriate to the relevant PTAs, to provide fully accredited Professional Learning specific to the school's annual plan. The program is expanding in 2017.

PTC NSW Ltd met the challenge of remaining financially viable in 2016. Being forced into the commercial rental market and losing funding for the Global Education Project sorely tested our resources and threatened our sustainability. The re-negotiation of our Ministerial grant and some tough decisions by the Board, made with the co-operation and the forbearance of our members and affiliates, have seen us through the worst. The securing of more affordable accommodation for the Secretariat became a priority in 2016. Hence we met for the 2016 AGM in the comfort of our new premises at Nyrang Street, Lidcombe.

During 2016 PTC NSW Board initiated a complete review of its governance and management processes. The Secretary Joe Alvaro has overseen the drafting of an updated Constitution. A new Director's *Induction Booklet* has been introduced to outline the roles and responsibilities of Directors including requirements for *Conflict of Interest Disclosure*, *Confidentiality of Information Agreement* and a Director's *Code of Conduct*. This review has been accompanied by the introduction of a much more collegiate decision-making structure based on standing Committees for all major areas of PTC NSW's operation.

During 2016 PTC NSW ran its usual annual program of events for members. The Treasurers' update on finance and governance issues presented by financial consultant Ms Catherine Gray was well attended and very well received. The 26th Annual Presidents' Dinner was revamped as a "Cocktail Evening" at Parliament House. All who attended agreed that it was a very successful evening. Our guest speaker, *Local Hero* journalist, author and editor, Dr Catherine Keenan was a highlight of the evening. The Annual Awards Night for 2016 will be held on 9 November. This also will be a changed format. This year we are holding a dinner for award winners and their association colleagues. You should have received an invitation and reserved the date!

All that I have reported and commented on is derived from the priorities of our 2014–2016 Strategic Plan. In 2016 we began implementation of the last priority of that plan when we set up a joint research project to investigate the motivation for teachers to undertake professional learning. It is too early to report in any detail but initial results indicate that this research will be both informative and instructive for our future planning around the provision of professional learning for teachers, and that of school leaders.

Throughout the year the Secretariat has maintained high quality provision of a full range of services in the areas of finance, IT support and desktop publishing for our affiliates and associates. The quarterly *President's Letter* has become an important element in our efforts to improve communication with affiliates and members, and to break through the communication "firewall", to get our message into schools to lift or improve PTC NSW's profile among classroom teachers in all sectors.

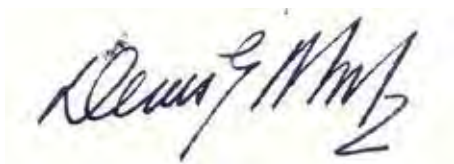
We have some priorities and challenges for 2017 already. We need to engage more effectively with our Primary colleagues, and with our newly recognised colleagues, the Early Childhood teachers. We also have plans to organise support and guidance for casual teachers as they confront the implications of GTIL 16.4. These issues will be part of our discussions and planning at our 2016/17 Planning Day. We also intend to begin investigation of the process by which we officially register teaching as a "profession" in NSW.

The Directors would like to congratulate our office staff, the PTC NSW Secretariat, on the spirit with which they have coped with continuing changes to work focus and to their roles, and with the disorder caused by packing and unpacking for relocation. It says a lot about them that the process appeared seamless. We offer a particular thank you to our Executive Officer David Browne, for his professionalism, his energy and his apparently inexhaustible initiative on behalf of PTC NSW and the teachers and students of NSW.

I would like to acknowledge the support of all PTC NSW Directors and acknowledge their work as volunteers at Board meetings and Committee meetings on such a regular basis. It is appropriate to single out my colleagues from the Executive Committee, Vice Presidents Nerina Pretlove and Rosalee Whiteley, Secretary Joe Alvaro and Treasurer Anne Thomas, who have not only embraced the significant changes to our operation, and to their roles, but have also made crucial contributions to the continuing re-organisation and redirection of PTC NSW in 2016. I must thank the retiring Directors Bernice Beechey and Wendy Kon for their work since joining the Board. We also thank Vice President Rosalee Whiteley who has been our rural and remote member attending meetings and functions from Wellington. Unfortunately we are also losing the hard work and commitment of our Treasurer Ann Thomas. Ann and the Finance Committee that she has led have done a great job during a difficult time for PTC NSW as it reframed its activities. The Board would also like to thank Terry Gibbs from Terry Gibbs & Co Pty Ltd who has been our auditor for quite a few years. We are retaining Terry's services as a financial advisor to the Board and Secretariat.

On a specially significant note, I would like to record our gratitude on behalf of the students and teachers of NSW to retiring Director, Past President and long time stalwart of PTC NSW Nerina Pretlove, for her commitment to education in NSW, her contribution to the Board of PTC NSW and her work at the national level with APTA. Few people would be aware of the committee work that Nerina has done "behind closed doors" for the teachers and students of NSW and Australia since joining the Board in 1998. While we are assured that Nerina will continue her association with PTC NSW as an active member of our initial Presidents' Advisory Committee in 2017, she will be much missed by all those who have worked closely with her during the last decade or more. We wish Nerina every success in her new role as Principal of a State secondary school in NSW. Keep your eye on future PTC NSW correspondence for details of a more formal occasion to farewell Nerina, Rosalee, Ann, Wendy and Bernice.

Lastly I would like to wish you all the best in your personal and professional life for the remainder of 2016. Significant challenges await us all in 2017.

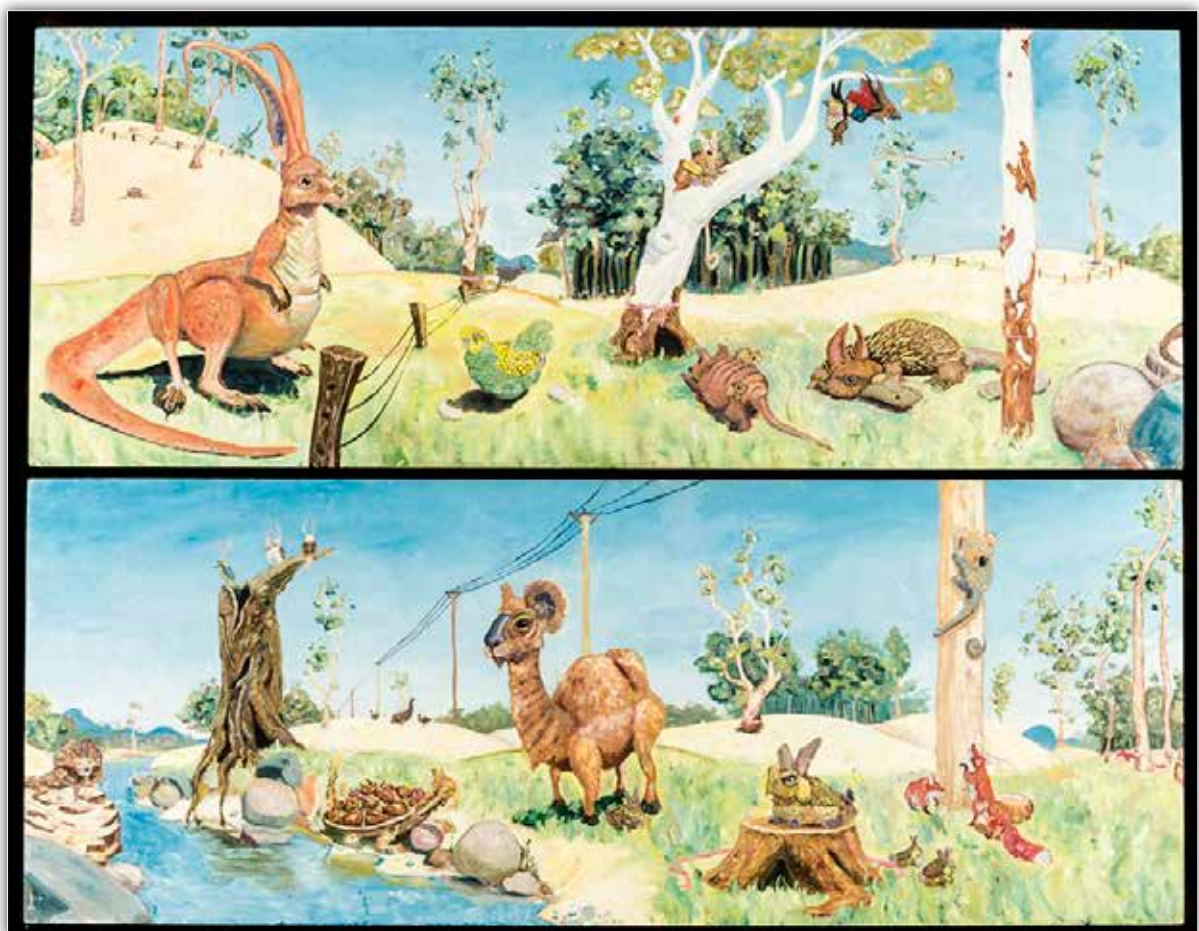


Dr Denis Mootz

President

26 October 2016

DIRECTORS' REPORT



For the Year Ended 30 June 2016

Page 13 image –
2015 HSC Major Work by J Denley

Our thanks to the Board of Studies Teaching and Educational Standards (BOSTES) for the use of this ArtExpress image

DIRECTORS' REPORT FOR THE YEAR ENDED 30 JUNE 2016

PROFESSIONAL TEACHERS' COUNCIL NSW

Your directors present this report on the company for the financial year ended 30 June 2016.

DIRECTORS

Directors have been in office since the start of the financial year to the date of this report unless otherwise stated. The names of the directors in office at any time during or since the end of the year.

JOE ALVARO	Secretary of the Board, member of the Executive. President of the Economics and Business Educators NSW. Member of the PTC NSW Media Awards Committee and the Professional Learning Committee.
BERNICE BEECHEY	Member of the Board. Member of the Executive of The Mathematical Association of NSW, Chair of the Primary Mathematics Association. Member of the PTC NSW Media Awards Committee.
CHERYL BRENNAN	Member of the Board. Vice President of Economics and Business Educators. Member of the PTC NSW Events Committee.
SUSAN CALDIS	Member of the Board. President of the Geography Teachers' Association NSW. Chair of the PTC NSW Research Committee.
LORRAINE CHAFFER	Member of the Board. Vice President of the Geography Teachers' Association NSW. Member of the PTC NSW Media Awards Committee and the Professional Learning (BOSTES Accreditation) Committee.
BRIAN ELLIOTT	Member of the Board. Member of the Legal Studies Association. Chair of the PTC NSW Media Awards Committee and member of the PTC NSW Finance Committee..
SUSAN GAZIS	Member of the Board. Treasurer of the English Teachers' Association NSW. President of the Australian Professional Teachers' Association. BOSTES observer on the PTC NSW Professional Learning Committee – BOSTES Accreditation.
WENDY KON	Member of the Board. Treasurer of Drama NSW. Member of the Communications Committee.
GERRY MCCLOUGHAN	Member of the Board. Member of the Primary Teachers' Network and the Science Teachers' Association.
DENIS MOOTZ	President of the Board. Treasurer and Journal Editor of the History Teachers' Association. Hon Secretary of the History Teachers' Association of Australia. Member of the PTC NSW Research Committee. Member of the PTC NSW Communications Committee. Member of the PTC NSW Events Committee. Member of the PTC NSW Professional Learning Committee.

DIRECTORS

NERINA PRETLOVE	Vice President of the Board, member of the Executive. President of the Professional Casual Teachers' Association. Australian Professional Teachers Association NSW representative.
MARGARET SHEPHERD	Member of the Board. Vice President of the Science Teachers' Association of NSW. Member of the PTC NSW Finance Committee.
JIM STURGISS	Member of the Board. Chair of the PTC NSW Professional Learning Committee – BOSTES Accreditation. Member of Science Teachers Association of NSW Inc.
ANN THOMAS	Treasurer of the Board. Member of the Executive and the PTC NSW Finance Committee. Member of the Mathematical Association of NSW. Member of the PTC NSW Sponsorship Committee.
ROSALEE WHITELEY	Vice President of the Board, member of the Executive. Member of the English Teachers' Association NSW – Branches Manager and Western Plains representative on the ETA Regional Committee.

DIRECTORS' MEETINGS

Directors' attendance at Board Meetings from 16th November 2015 to 17th October 2016

	Nov 16/15	Feb 8/16	Mar 7/16	May 2/16	Jun 2/16	Jul 25/16	Aug 29/16	Oct 17/16
Joe Alvaro	✓	E	✓	✓	✓	E	✓	✓
Bernice Beechey	✓	L	L	✓	✓	✓	A	✓
Cheryl Brennan	E	✓	✓	✓c	✓c	L	✓c	✓
Susan Caldis (Appointed March 2016)			✓	✓	A	A	✓c	A
Lorraine Chaffer	✓	✓	✓	✓c	✓c	–	✓	✓
Brian Elliott	✓	E	✓	✓	✓	✓	✓	✓
Susan Gazis	A	✓	✓	✓	✓	✓c	E	✓
Wendy Kon	E	A	✓c	E	✓c	✓c	L	✓
Gerry McCloughan (Appointed May 2016)				✓	✓	✓	L	A
Denis Mootz	✓	✓	✓	✓	✓	L	L	✓
Nerina Pretlove	✓	✓	A	✓	A	A	✓	✓
Margaret Shepherd	✓	✓	✓	✓	✓	✓	✓	✓
Jim Sturgiss	✓	✓	A	✓	✓	✓	✓	✓
Ann Thomas	✓	✓	✓	✓	✓	✓	✓	✓c
Rosalee Whiteley	✓c	✓c	✓c	✓c	A	✓c	L	✓c

KEY

- | | | | |
|----|-------------------------|---|---|
| ✓ | Present | E | Apologies due to school or association business or extenuating family circumstances |
| ✓c | Present Conference Link | – | Non attendance |
| A | Apologies | | |
| L | Leave of absence | | |

OPERATING RESULT

The deficiency of the company for the financial year amounted to \$1929.00.
Year ended 30 June 2016

REVIEW OF OPERATIONS

A review of operations for the Professional Teachers' Council NSW during the financial year has resulted in the conclusion that the principal activities of the company are to act as a coordination and consultancy body for the professional teachers associations in New South Wales. No significant change in the nature of these activities occurred during the financial year.

PRINCIPAL ACTIVITIES

In the opinion of the Directors of the Professional Teachers' Council NSW, there have been no significant changes in the operation of the Professional Teachers' Council NSW in the past twelve months. The Council has continued to act as a co-ordination and consultancy body for professional teachers' associations in NSW.

AFTER BALANCE DATE EVENTS

No matters or circumstances have arisen since the end of the financial year which significantly affected or may significantly affect the operations of the company, the results of those operations, or the state of affairs of the company in subsequent financial years.

FUTURE DEVELOPMENTS

The likely developments in the operations of the company and the expected results of those operations in future financial years are expected to continue as previously and be a coordination and consultancy peak organisation that provides services to member associations.

ENVIRONMENTAL ISSUES

The company's operations are not regulated by any significant environmental regulation under a law of the Commonwealth or of a State or Territory.

DIVIDENDS

The company was incorporated as being limited by guarantee. Under the original Memorandum & Articles and supported by previous and current Corporations law, the company is specifically precluded from paying any dividends to members.

OPTIONS

As the company is limited by guarantee, shares and options are not available to members or investors.

DIRECTORS' INTERESTS IN SHARES OF THE COMPANY OR RELATED BODIES CORPORATE

No director has a financial interest in the company or a financial interest in any of the company's member associations.

DIRECTORS' BENEFITS

No director has received or has become entitled to receive, during or since the financial year, a benefit because of a contract made by the company or related body corporate with a director, a firm in which a director is a member or an entity in which a director has a substantial financial interest.

This statement excludes a benefit included in the aggregate amount of emoluments received or due and receivable by directors shown in the company's accounts, or the fixed salary of a full-time employee of the company or related body corporate.

INDEMNIFYING OFFICER OR AUDITOR

No indemnities have been given or agreed to be given or insurance premiums paid or agreed to be paid, during or since the end of the financial year, to any person who is or has been an officer or auditor of the company.

PROCEEDINGS ON BEHALF OF COMPANY

No person has applied for leave of Court to bring proceedings on behalf of the company or intervened in any proceedings to which the company is a party for the purpose of taking responsibility on behalf of the company for all or any part of those proceedings. The company was not a party to any such proceedings during the year.

AUDITOR'S INDEPENDENCE DECLARATION

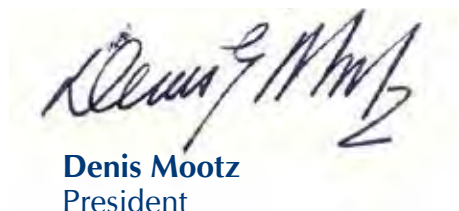
A copy of the auditor's independence declaration as required under section 307C of the Corporations Act 2001 has been included.

Signed in accordance with a resolution of the Board of Directors:

Dated this 29th day of October 2016



Ann Thomas
Treasurer



Denis Mootz
President

Page 21 image –
2015 HSC Major Work by K Galea

Our thanks to the Board of Studies Teaching and Educational Standards (BOSTES) for the use of this ArtExpress image

FINANCIAL STATEMENTS



For the Year Ended 30 June 2016

DIRECTORS' DECLARATION PROFESSIONAL TEACHERS' COUNCIL NSW

ABN 48 002 220 957

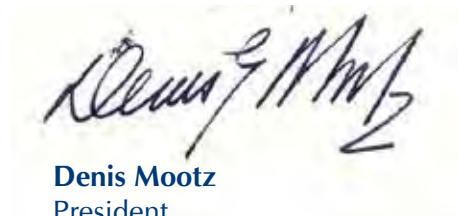
The directors of the company declare that:

1. The financial statements and notes are in accordance with the Corporations Act 2001 and:
 - (a) comply with Accounting Standards and the Corporations Regulations; and
 - (b) give a true and fair view of the company's financial position as at 30 June 2016 and of its performance for the year ended on that date.
2. In the directors' opinion, there are reasonable grounds to believe that the company will be able to pay its debts as and when they become due and payable.

This declaration is made in accordance with a resolution of the Board of Directors.



Ann Thomas
Treasurer



Denis Mootz
President

Dated this 29th day of October 2016

PROFESSIONAL TEACHERS' COUNCIL, NSW**ACN - 002 220 957****STATEMENT OF COMPREHENSIVE INCOME****FOR THE YEAR ENDED 30 JUNE, 2016**

	<u>NOTE</u>	<u>2016</u> \$	<u>2015</u> \$
Revenues from ordinary activities	2	617,704	678,816
Marketing expenses		-	-
Occupancy expenses		(70,229)	(71,984)
Administration expenses		(549,404)	(902,796)
		-----	-----
Net (deficiency)/surplus from ordinary activities	3	(1,929)	(295,964)
Other comprehensive income		-	-
		-----	-----
Total comprehensive income attributable to members of the entity		(1,929) =====	(295,964) =====

The accompanying notes form part of the financial statements.

PROFESSIONAL TEACHERS' COUNCIL, NSW**ACN - 002 220 957****STATEMENT OF FINANCIAL POSITION****AS AT 30 JUNE, 2016**

	<u>NOTE</u>	<u>2016</u> \$	<u>2015</u> \$
CURRENT ASSETS			
Cash and Cash Equivalents	4	381,693	486,349
Trade and Other Receivables	5	77,700	64,909
		-----	-----
TOTAL CURRENT ASSETS		459,393	551,258
		-----	-----
NON-CURRENT ASSETS			
Plant and Equipment	6	5,284	16,743
		-----	-----
TOTAL NON-CURRENT ASSETS		5,284	16,743
		-----	-----
<u>TOTAL ASSETS</u>		464,677	568,001
		-----	-----
CURRENT LIABILITIES			
Trade and Other Payables	7	45,374	133,363
Provisions	8	10,453	12,028
		-----	-----
TOTAL CURRENT LIABILITIES		55,827	145,391
		-----	-----
NON-CURRENT LIABILITIES			
Provisions	8	22,238	34,069
		-----	-----
TOTAL NON-CURRENT LIABILITIES		22,238	34,069
		-----	-----
<u>TOTAL LIABILITIES</u>		78,065	179,460
		-----	-----
<u>NET ASSETS</u>		386,612	388,541
		=====	=====
EQUITY			
Retained Earnings		386,612	388,541
		-----	-----
<u>TOTAL EQUITY</u>		386,612	388,541
		=====	=====

The accompanying notes form part of the financial statements.

PROFESSIONAL TEACHERS' COUNCIL, NSW**ACN - 002 220 957****STATEMENT OF CASH FLOWS****FOR THE YEAR ENDED 30 JUNE, 2016**

	<u>Note</u>	<u>2016</u> \$	<u>2015</u> \$
<u>CASH FLOW FROM OPERATING ACTIVITIES</u>			
Receipts from customers		263,173	380,496
Receipts of grants		340,402	308,178
Payments to suppliers and employees		(708,501)	(955,742)
Interest Received		1,338	1,018
Net cash generated from/(used in) operating activities	9	(103,588)	(266,050)
<u>CASH FLOW FROM INVESTING ACTIVITIES</u>			
Payment for plant & equipment		(1,068)	-
Net cash provided by/(used in) investing activities		(1,068)	-
Net increase/(decrease) in cash held		(104,656)	(266,050)
Cash at beginning of year		486,349	752,399
CASH AT END OF YEAR	4	381,693	486,349

The accompanying notes form part of the financial statements.

PROFESSIONAL TEACHERS' COUNCIL, NSW**ACN - 002 220 957****STATEMENT OF CHANGES IN EQUITY****FOR THE YEAR ENDED 30 JUNE, 2016**

	<u>Retained</u> <u>Earnings</u> \$	<u>Total</u> \$
Balance at 30 June 2014	684,505	684,506
	-----	-----
Comprehensive income		
Deficiency for the year	(295,964)	(295,964)
Other comprehensive income	-	-
	-----	-----
Total comprehensive income	(295,964)	(295,964)
	-----	-----
Balance at 30 June 2015	388,541	388,541
	-----	-----
Comprehensive income		
Deficiency for the year	(1,929)	(1,929)
Other comprehensive income	-	-
	-----	-----
Total comprehensive income	(1,929)	(1,929)
	-----	-----
Balance at 30 June 2016	386,612	386,612
	=====	=====

The accompanying notes form part of the financial statements.

PROFESSIONAL TEACHERS' COUNCIL, NSW**ACN - 002 220 957****NOTES TO THE FINANCIAL STATEMENTS****FOR THE YEAR ENDED 30 JUNE, 2016****1. SUMMARY OF SIGNIFICANT ACCOUNTING POLICIES**

The directors have prepared the financial statements on the basis that the company is a non-reporting entity because there are no users who are dependent on its general purpose financial statements. These financial statements are therefore special purpose financial statements that have been prepared in order to meet the requirements of the Corporations Act 2001.

The financial statements have been prepared in accordance with the mandatory Australian Accounting Standards applicable to entities reporting under the Corporations Act 2001 and the significant accounting policies disclosed below which the directors have determined are appropriate to meet the needs of members. Such accounting policies are consistent with those of previous periods unless stated otherwise.

The financial statements have been prepared on an accruals basis and are based on historical costs unless otherwise stated in the notes. The accounting policies that have been adopted in the preparation of the statements are as follows.

Accounting Policies**a) Revenue**

Grant revenue is recognised in the statement of comprehensive income when the entity obtains control of the grant and it is probable that the economic benefits gained from the grant will flow to the entity and the amount of the grant can be measured reliably.

If conditions are attached to the grant which must be satisfied before it is eligible to receive the contribution, the recognition of the grant as revenue will be deferred until those conditions are satisfied.

When grant revenue is received whereby the entity incurs an obligation to deliver economic value directly back to the contributor, this is considered a reciprocal transaction and the grant revenue is recognised in the statement of financial position as a liability until the service has been delivered to the contributor, otherwise the grant is recognised as income on receipt.

PROFESSIONAL TEACHERS' COUNCIL, NSW

ACN - 002 220 957

NOTES TO THE FINANCIAL STATEMENTS

FOR THE YEAR ENDED 30 JUNE, 2016

1. SUMMARY OF SIGNIFICANT ACCOUNTING POLICIES

a) **Revenue (continued)**

Interest is recognised as revenue when received.

Revenue from the rendering of a service is recognised upon the delivery of the service to the customers.

All revenue is stated net of the amount of goods and services tax (GST).

b) **Depreciation**

Property, plant and equipment are depreciated over their estimated useful lives using the prime cost method.

c) **Employee Entitlements**

The amount expected to be paid to employees for their pro-rata entitlements to annual leave is accrued annually at current wage rates.

d) **Income Tax**

The directors of the company have determined that the company is exempt from income tax.

e) **Comparative Figures**

Where necessary comparative figures have been adjusted to conform with changes in presentation in the current financial year.

f) **Economic Dependence**

Professional Teachers' Council, NSW is dependent on a grant from the NSW Government's Department of Education.

PROFESSIONAL TEACHERS' COUNCIL, NSW**ACN - 002 220 957****NOTES TO THE FINANCIAL STATEMENTS****FOR THE YEAR ENDED 30 JUNE, 2016**

	<u>2016</u>	<u>2015</u>
	\$	\$
2. OPERATING REVENUE		
Membership Fees	123,057	128,581
Secretariat Services	166,568	220,026
Study Tours	-	128,673
Interest Received	1,338	1,018
Other Income	93,325	53,233
Grants Received	340,402	308,178
Global Ed. Project Deficiency	(106,986)	(160,893)
	-----	-----
	617,704	678,816
	=====	=====
3. NET SURPLUS		
Expenses		
Depreciation and Amortisation:		
- office equipment	7,706	5,190
- leasehold improvement	4,821	375
	-----	-----
Total Depreciation and Amortisation	12,527	5,565
	=====	=====
Employee Benefits	(13,405)	(22,920)
	=====	=====
Remuneration of Auditor:		
- audit	5,618	3,000
- other services	4,732	4,300
	-----	-----
Total Remuneration of Auditor	10,350	7,300
	=====	=====

PROFESSIONAL TEACHERS' COUNCIL, NSW**ACN - 002 220 957****NOTES TO THE FINANCIAL STATEMENTS****FOR THE YEAR ENDED 30 JUNE, 2016**

	<u>2016</u>	<u>2015</u>
	\$	\$
4. CASH AND CASH EQUIVALENTS		
Cash on Hand	107	107
Cash at Bank	381,586	486,242
	-----	-----
	381,693	486,349
	=====	=====
5. TRADE AND OTHER RECEIVABLES		
Trade Debtors	69,996	73,856
Less: Provision for Doubtful Debts	(2,000)	(12,000)
	-----	-----
	67,996	61,856
Bonds Paid	200	200
GST Receivable	-	2,853
Other Receivables	9,504	-
	-----	-----
	77,700	64,909
	=====	=====
6. PLANT & EQUIPMENT		
Office Equipment & Furniture At Cost	47,301	84,509
Less: Accumulated Depreciation	(42,017)	(72,587)
	-----	-----
	5,284	11,922
	-----	-----
Building Improvements At Cost	-	7,494
Less: Accumulated Amortisation	-	(2,673)
	-----	-----
	-	4,821
	-----	-----
	5,284	16,743
	=====	=====

PROFESSIONAL TEACHERS' COUNCIL, NSW**ACN - 002 220 957****NOTES TO THE FINANCIAL STATEMENTS****FOR THE YEAR ENDED 30 JUNE, 2016**

	<u>2016</u>	<u>2015</u>
	\$	\$
7. TRADE AND OTHER PAYABLES		
Trade Creditors	6,289	15,490
Mastercard	2,122	1,560
Income Received in Advance	3,182	-
Unexpended Government Grant	6,360	100,159
GST Payable	18,196	-
PAYG Withheld Payable	5,262	6,516
Other Payables	3,963	9,638
	-----	-----
	45,374	133,363
	=====	=====
8. PROVISIONS		
Current		
Employee Entitlements	10,453	12,028
	=====	=====
Non-Current		
Employee Entitlements	22,238	34,069
	=====	=====

PROFESSIONAL TEACHERS' COUNCIL, NSW**ACN - 002 220 957****NOTES TO THE FINANCIAL STATEMENTS****FOR THE YEAR ENDED 30 JUNE, 2016**

	<u>2016</u> \$	<u>2015</u> \$
9. CASH FLOW INFORMATION		
Reconciliation of cash flows from operations with surplus from ordinary activities after income tax:		
Deficiency from ordinary activities after income tax	(1,929)	(295,964)
Non-cash flows in profit from ordinary activities:		
Depreciation	12,527	5,970
Changes in assets and liabilities:		
(Increase)/decrease in receivables	(12,791)	10,876
Increase/(decrease) in payables	(87,989)	35,988
Increase/(decrease) in provision	(13,406)	(22,920)
CASH FLOWS FROM OPERATIONS	<u>(103,588)</u>	<u>(266,050)</u>

PROFESSIONAL TEACHERS' COUNCIL, NSW

ACN - 002 220 957

NOTES TO THE FINANCIAL STATEMENTS

FOR THE YEAR ENDED 30 JUNE, 2016

10. ENTITY LIMITED BY GUARANTEE

The Professional Teachers' Council, NSW is incorporated as a company limited by guarantee. No share capital is defined in the Memorandum & Articles. All members of the company are limited to a guarantee of \$100 per member in the event of a deficiency in a winding up.

11. ENTITY DETAILS

The registered office of the company is:

Professional Teachers' Council, NSW
25 Nyrang Street
LIDCOMBE NSW 2141

The principal place of business is:

Professional Teachers' Council, NSW
25 Nyrang Street
LIDCOMBE NSW 2141

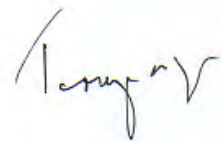
PROFESSIONAL TEACHERS' COUNCIL, NSW

ACN - 002 220 957

AUDITOR'S INDEPENDENCE DECLARATION
UNDER SECTION 307C OF THE CORPORATIONS ACT 2001
TO THE MEMBERS OF THE PROFESSIONAL TEACHERS' COUNCIL, NSW

I declare that, to the best of my knowledge and belief, during the year ended 30 June 2016 there have been:

- i. no contraventions of the auditor independence requirement as set out in the Corporations Act 2001 in relation to the audit; and
- ii. no contraventions of any applicable code of professional conduct in relation to the audit.



TERRENCE E. GIBBS
Company Auditor

Date: 6 October, 2016

5th Floor
20-24 Wentworth Street
PARRAMATTA NSW 2150

**INDEPENDENT AUDITOR'S REPORT
TO THE MEMBERS OF THE
PROFESSIONAL TEACHERS' COUNCIL, NSW**

I have audited the accompanying financial report, being a special purpose financial report, of Professional Teachers' Council, NSW, which comprises the Statement of Financial Position as at 30 June 2016, the Statement of Comprehensive Income, Statement of Changes in Equity and Statement of Cash Flows for the year then ended, Notes comprising a Summary of Significant Accounting Policies and other explanatory information, and the Directors' Declaration.

Directors' Responsibility for the Financial Report

The directors of the company are responsible for the preparation of the financial report and have determined that the accounting policies described in Note 1 to the financial report are appropriate to meet the requirements of the Corporations Act 2001 and are appropriate to meet the needs of the members. The directors' responsibility also includes such internal control as the directors determine is necessary to enable the preparation of a financial report that is free from material misstatement, whether due to fraud or error.

Auditor's Responsibility

My responsibility is to express an opinion on the financial report based on my audit. I have conducted my audit in accordance with Australian Auditing Standards. Those standards require that I comply with relevant ethical requirements relating to audit engagements and plan and perform the audit to obtain reasonable assurance whether the financial report is free from material misstatement.

An audit involves performing procedures to obtain audit evidence about the amounts and disclosures in the financial report. The procedures selected depend on the auditor's judgement, including the assessment of the risks of material misstatement of the financial report, whether due to fraud or error. In making those risk assessments, the auditor considers internal control relevant to the entity's preparation of the financial report that gives a true and fair view in order to design audit procedures that are appropriate in the circumstances, but not for the purpose of expressing an opinion on the effectiveness of the entity's internal control. An audit also includes evaluating the appropriateness of accounting policies used and the reasonableness of accounting estimates made by the directors, as well as evaluating the overall presentation of the financial report.

I believe that the audit evidence I have obtained is sufficient and appropriate to provide a basis for my audit opinion.

- 2 -

Independence

In conducting my audit, I have complied with the independence requirements of the Corporations Act 2001.

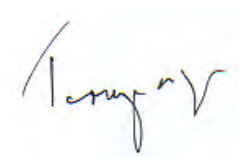
Opinion

In my opinion, the financial report of Professional Teachers' Council, NSW is in accordance with the Corporations Act 2001, including:

- (a) giving a true and fair view of the Professional Teachers' Council, NSW's financial position as at 30 June 2016 and of its performance for the year ended on that date; and
- (b) complying with Australian Accounting Standards to the extent described in Note 1 and the Corporations Regulations 2001.

Basis of Accounting

Without modifying my opinion, I draw attention to Note 1 to the financial report, which describes the basis of accounting. The financial report has been prepared for the purpose of fulfilling the directors' financial reporting responsibilities under the Corporations Act 2001. As a result, the financial report may not be suitable for another purpose.



TERRENCE E. GIBBS
Company Auditor

Date: 6 October, 2016

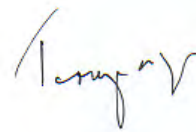
5th Floor
20-24 Wentworth Street
PARRAMATTA NSW 2150

PROFESSIONAL TEACHERS' COUNCIL, NSW

ACN - 002 220 957

ACCOUNTANTS REPORT TO THE MEMBERS

We have prepared the accompanying Income & Expenditure Statements for the year ended 30 June 2016 from the books and records of the Association and other information provided by the employees of the Association exclusively for the use and benefit of the Association its Directors & Members. Under the terms of our engagement we have not audited the Income & Expenditure Statements.



Terrence E. Gibbs

T.E. GIBBS & CO PTY. LIMITED
Public Accountants & Company Auditors

Date: 6 October, 2016

5th Floor
20-24 Wentworth Street
PARRAMATTA NSW 2150

PROFESSIONAL TEACHERS' COUNCIL, NSW**ACN - 002 220 957****INCOME & EXPENDITURE STATEMENT****FOR THE YEAR ENDED 30 JUNE, 2016**

	<u>2016</u>	<u>2015</u>
	\$	\$
INCOME		
Membership Fees	119,875	128,581
Membership Fees – PTC Plus	3,182	-
Secretariat	166,568	220,026
Rental Income	44,885	44,980
Professional Development – PTC Plus	8,209	-
Presidents Dinner	2,995	2,500
Workshops	-	4,443
Study Tour – China	-	34,338
Study Tour – India	-	14,716
Study Tour – Japan	-	55,180
Conference – Pacific Circle	-	24,439
Consulting Income	24,318	-
Miscellaneous Income	12,918	1,310
Interest Received	1,338	1,018
Grant Received from Dept of Education	308,178	308,178
Prior year Grant expended in current year	32,224	-
	-----	-----
	724,690	839,709
	-----	-----

PROFESSIONAL TEACHERS' COUNCIL, NSW**ACN - 002 220 957****INCOME & EXPENDITURE STATEMENT****FOR THE YEAR ENDED 30 JUNE, 2016**

	<u>2016</u>	<u>2015</u>
	\$	\$
EXPENSES		
Audit/Accounting Fees	10,350	7,300
Bad Debts	-	-
Bank Fees	555	3,075
Capitation	1,477	1,477
Depreciation	12,527	5,565
Doubtful Debts	(10,000)	7,000
Filing Fees	205	79
Sponsorships	7,648	-
Subscription	2,795	4,501
Internet/Email	2,177	990
Telephone/Fax	11,047	6,917
Computer Support	19,565	52,973
Equipment Leasing	12,942	14,439
Equipment R & M	290	123
Accrued Annual Leave	32,258	30,992
Accrued Long Service Leave	(11,831)	19,285
Contractor	-	1,248
Staff Amenities	3,096	2,396
Staff Benefits	1,187	-
Staff Training	1,091	414
Superannuation	34,292	39,179
Wages & Salaries	348,544	353,444
Workers Compensation	2,103	2,027
Recruitment Fees	-	5,060
Cleaning	8,303	9,707
Consultancy	-	3,700
Courier	2,674	1,611
Electricity	3,406	4,038
Insurance	6,751	6,274
Legal Fees	40	5,009
Office Supplies	1,140	4,481
Office Rent	58,092	57,265

PROFESSIONAL TEACHERS' COUNCIL, NSW**ACN - 002 220 957****INCOME & EXPENDITURE STATEMENT****FOR THE YEAR ENDED 30 JUNE, 2016**

	<u>Note</u>	<u>2016</u> \$	<u>2015</u> \$
Photography		450	600
Postage		11,079	22,616
Printing		16,198	13,594
Repairs & Maintenance		-	377
Stationery		3,455	3,875
Water Usage		428	597
PTC Events – Travel		2,370	5,324
PTC Events – Accommodation		766	298
PTC Events – Venue Hire		4,264	404
PTC Events – Catering Costs		6,561	10,083
PTC Events – Presenters		48	1,200
PTC Events – Awards		2,033	1,211
Study Tour – China		-	35,187
Study Tour – India		-	13,716
Study Tour – Japan		-	54,713
Conference – Pacific Circle		-	14,828
Grants to Member Associations		9,257	-
Grant - Assoc – Printing		-	134,736
Grant - Assoc – SMS/Postage		-	10,852
		-----	-----
		619,633	974,780
		-----	-----
Surplus/(Deficiency) from operating activities		105,057	(135,071)
(Deficiency)/Surplus from special project	1	(106,986)	(160,893)
		-----	-----
<u>NET (DEFICIENCY)/SURPLUS FOR THE YEAR</u>		(1,929)	(295,964)
		=====	=====

PROFESSIONAL TEACHERS' COUNCIL, NSW**ACN - 002 220 957****INCOME & EXPENDITURE STATEMENT****FOR THE YEAR ENDED 30 JUNE, 2016****NOTE 1: SURPLUS FROM SPECIAL PROJECT**

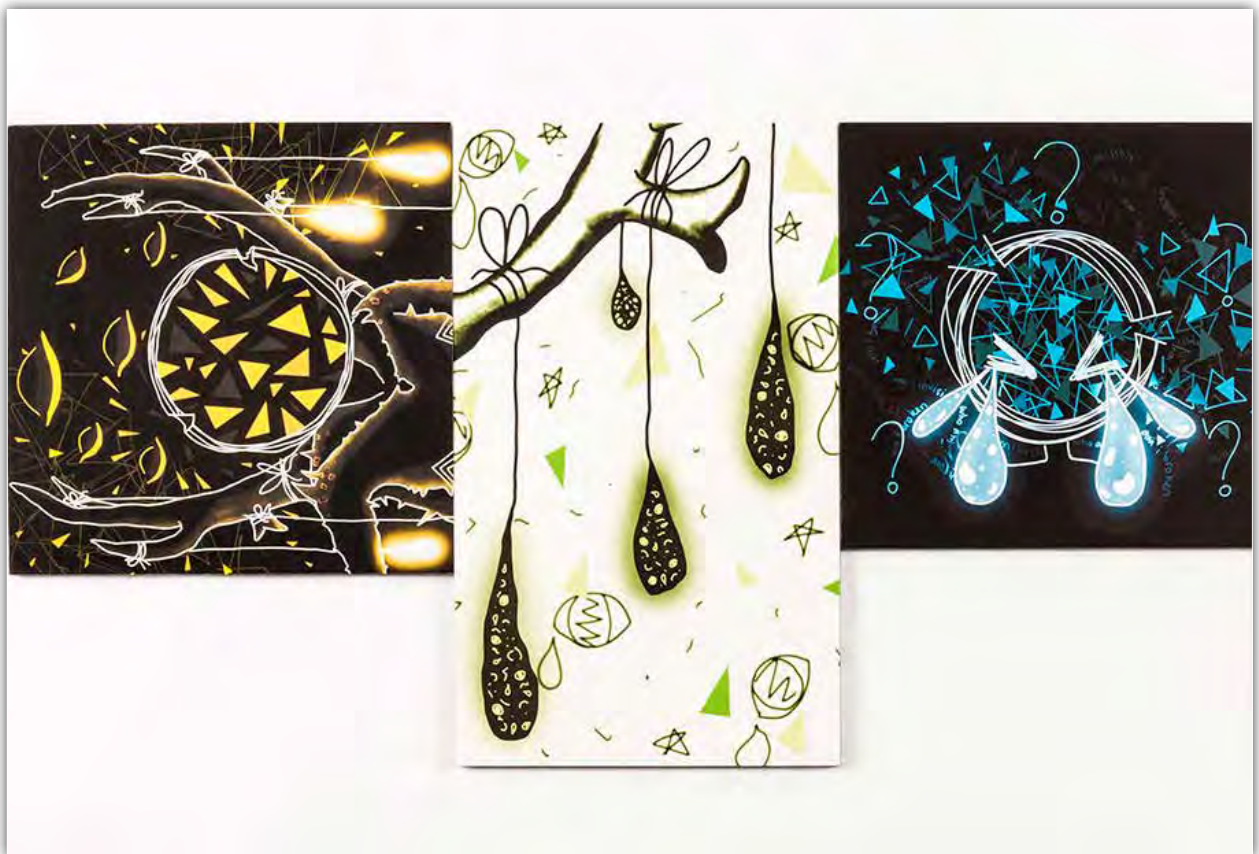
The Global Education Project was funded by DFAT – Australian Aid Program (formerly AusAID), and the project was completed in December 2015.

	<u>2016</u>	<u>2015</u>
	\$	\$
INCOME		
Grants Received from AusAID/DFAT	-	106,245
Miscellaneous Income Received	82	-
Interest Received	1,110	4,549
	-----	-----
	1,192	110,794
	-----	-----
EXPENSES		
Audit	500	500
Bank Fees	204	56
Bookkeeping	1,260	4,330
Catering	-	111
Conference	-	273
Consultants	19,965	69,094
Depreciation	-	405
Filing Fees	95	-
Graphic Design	4,386	7,314
Grant Expenses	50,407	106,963
Postage	-	10,680
Printing and Stationery	1,686	2,962
Rent	4,400	5,720
Secretariat	25,275	59,079
Staff Amenities	-	17
Travel Expenses	-	4,183
	-----	-----
	108,178	271,687
	-----	-----
<u>(DEFICIENCY)/SURPLUS</u>		
<u>FROM SPECIAL PROJECT</u>	(106,986)	(160,893)
	=====	=====

Page 45 image –
2015 HSC Major Work by L Radwill

Our thanks to the Board of Studies Teaching and Educational Standards (BOSTES) for the use of this ArtExpress image

TREASURER'S REPORT



For the Year Ended 30 June 2016

TREASURER'S REPORT FOR THE YEAR ENDED 30 JUNE 2016

SUMMARY

For the year ending 30 June 2016 the Professional Teachers Council NSW recorded a net loss from ordinary activities of \$1929 compared to a net loss of \$295,964 for the previous year.

The improvement in the overall situation for PTC NSW reflects the PTC NSW Board decision to distribute a smaller share of the grant money to member associations.

The net assets of the association as at 30 June 2016 were \$386,612 comprising Cash at Bank \$381,693.

NOTES

Treasurer and Finance Committee

Following the election at the 2015 Annual General Meeting, the Finance committee comprised Ann Thomas (Treasurer), Margaret Shepherd (PTC NSW Board member), Brian Elliott (PTC NSW Board member), Mai Mai Lin (Accounts Officer, PTC NSW) and David Browne (Executive Officer, PTC NSW)

During the year, the Finance Committee has met regularly to undertake a number of tasks including monitoring PTC NSW finances, preparing related reports to PTC Executive and Board and preparing a budget for 2016/17 financial year.

Income Sources

The Global Education Project drew to an end in June 2016. In this financial year PTC received income from the project for secretariat services related to the production of teaching/learning resources and from renting storage space for Global Education resources.

Income from Global Education Project	2011 - 2012	2012 - 2013	2013 - 2014	2014 - 2015	2015 - 2016
Secretariat fees	\$ 62,031	\$ 119,661	\$ 102,682	\$ 59,079	\$25,275
Rent	-	\$ 1,980	\$ 5,720	\$ 5,720	\$4,400
Total	\$ 62,031	\$ 121,641	\$ 108,402	\$ 64,799	\$29,675

There has been a decline over the last four years in the overall income generated by **secretariat services**, that is secretariat income minus secretariat expenses (but not including staff costs).

	2011 - 2012	2012 - 2013	2013 - 2014	2014 - 2015	2015 - 2016
Income from secretariat services	\$ 270,733	\$ 310,146	\$ 248,456	\$206,432	\$166,568

Income from **capitations** is down on the previous year.

	2011 - 2012	2012 - 2013	2013 - 2014	2014 - 2015	2015 - 2016
Capitations	\$ 132,232	\$ 134,632	\$ 127,779	\$ 128,581	\$119,875

In the past PTC NSW has **rented excess office space** to some member associations (as well as the Global Education Project) and this has provided a steady income stream for PTC NSW up until January 2013 when PTC NSW administrative offices moved from school premises at Leichhardt into commercial rented premises at Ashfield.

	2011 - 2012	2012 - 2013	2013 - 2014	2014 - 2015	2015 - 2016
Rental income	\$ 40,209	\$ 36,306	\$ 44,980	\$ 44,980	\$44,885
Commercial rental expenses	N/A	\$ 18,822	\$ 53,907	\$ 57,862	\$58,092
Difference (Income – Expenses)	\$ 40,209	\$ 17,484	- \$ 8,927	-\$ 12,882	- \$13,207

RECOMMENDATIONS

I move that:

1. the accounts for 1 July 2015 – 30 June 2016 Financial Year be accepted
2. Tinworth & Co (Rod Laws CA) be nominated as Auditor for 1 July 2016 – 30 June 2017 Financial Year
3. Terry Gibbs & Co Pty Ltd be retained as Financial Adviser



Ann Thomas
Treasurer
Professional Teachers' Council NSW
29 October 2016

Page 49 image –
Detail – 2015 HSC Major Work by T Moore

Our thanks to the Board of Studies Teaching and Educational Standards (BOSTES) for the use of this ArtExpress image

EXTERNAL COMMITTEE AND PTC NSW SUBCOMMITTEE REPORTS



For the Year Ended 30 June 2016

BOARD OF STUDIES TEACHING AND EDUCATIONAL STANDARDS (BOSTES) NSW

QUALITY TEACHING COUNCIL (QTC) AND THE PROFESSIONAL LEARNING ENDORSEMENT ADVISORY COMMITTEE (PLEAC)

2016 REPORT

The Professional Teachers' Council NSW has a Ministerial Appointment to the Quality Teaching Council and Vice President Nerina Pretlove was appointed to both the second and third QTC. From this position, I represented the QTC on the PLEAC. Both organisations are representative of the teaching profession and are cross sectoral with membership from early childhood to the tertiary sectors as well as employers and unions.

The Quality Teaching Council has considered a number of commissioned reports that will underpin professional learning in NSW across the years to come. A wide range of policies have been considered and endorsed by the QTC and these can be found at www.nswteachers.nsw.edu.au/publications-policies-resources/policies.

The workload of the PLEAC has considerably increased as more providers have submitted applications to be considered as accredited providers of professional learning in NSW. The recent inclusion of the Early Childhood sector into the teacher accreditation process has seen new providers enter the professional learning market.

PTC NSW participated in the recent Ministerial Review through an appearance before the stakeholder face to face interviews and in a written submission. The aim of the Review was to examine the extent to which the combination of the previous Board of Studies and the NSW Institute of Teachers have aligned curriculum, assessment, school regulation and teaching standards into a single entity. As a consequence of the review, both the QTC and the PLEAC will cease in their present guise. The PLEAC has met for the last time and there is one meeting remaining for the QTC to be held later this term.

It has been a pleasure to work with such an amazing group of educational stakeholders who have brought their unique perspectives to the table and enriched the professional discourse about the provision of quality professional learning across the career stages. I thank the Board of PTC NSW for my nomination for Ministerial consideration to the QTC. It has enabled the voice of the teaching associations to be heard at the highest levels of policy and its implementation in what is our core work.

Nerina Pretlove

Vice President PTC NSW



AUSTRALIAN PROFESSIONAL TEACHERS ASSOCIATION

APTA REPORT 2016

APTA is the national body of state and territory joint councils. The Professional Teachers Council NSW is one of the eight members of APTA. Across the country, all joint state and territory joint councils have reported that they have faced a range of challenges. To this end, the Board formed a working group to develop opportunities supporting APTA, the state and territory joint councils and joint councils member associations.

The APTA Strategic Plan states that the mission of APTA is to provide leadership that supports and advances professional teaching associations.

The mission is supported by five (5) goals, which are summarised as:

1. Be a voice and raise the profile
2. Build an informed and supportive network for collaborative activities
3. Be proactive in the policy area
4. Advocate on matters of significance
5. Manage and resource the association.

APTA's work in 2016 has involved a consideration of capitation fees to its member associations with a number of the state joint councils struggling financially and seeking various ways of supporting their member associations. This will take time to resolve.

APTA is invited to consultations organised through Department of Education (Federal), ACARA and AITSL.

APTA ACTIVITIES IN 2016

ADOBE Connect

APTA has at its recent Board meeting resolved to trial the use of ADOBE Connect across the joint councils and member associations. This trial will commence in 2017 with training for joint councils and their member associations early in the new year.

APTAs – APTA Awards

These awards are hugely successful across the country. The awards were held on 4 June 2016 at the Australian Catholic University, Sydney.

The APTAs were sponsored by Solution Tree and the Australian Catholic University.



Nerina Pretlove – Meritorious Contribution to the Profession, presented by Jane St John from Solution Tree.



Mathematical Association of NSW – Innovative Association Award 2016. John Meng and Rob Randall ACARA

APTA presented five sets of awards to individuals and organisations that have led, supported and advanced professional teaching associations and enhanced the status of teaching as a profession.

Dorothy Hoddinott Medal for Outstanding Lifetime Achievement

Dr Janet Reynolds – JCQTA – Home Economics in Australia, Queensland (HEIAQ)

Early Career Teacher Award

Cat Callery – CEASA – South Australian German Teachers Association
 Telana Vernon – PTCWA – Home Economics Institute of Australia Western Australian Division (HEIAWA)
 Melanie Wild – JCQTA – English Teachers Association of Queensland (ETAQ)

APTA Meritorious Contribution to the Profession Award

Glenn Amezdroz – Australian Council for Health, Physical Education and Recreation Queensland (ACHPER QLD)
 Rick Baldock – Council of Education Associations of South Australia (CEASA)
 Leanne Dunne – Professional Teachers' Association Northern Territory (PTANT)
 Dianne Good – PTC WA – Art Education Association of Western Australia (ArtEdWA)
 Heather Kerr – PTCWA – The Early Years in Education Society (EYES)
 Malcolm McInerney – CEASA – Geography Teachers Association South Australia (GTASA)
 Nerina Pretlove – Professional Teachers' Council NSW (PTC NSW)

Innovative Association Award

Australian Council for Health, Physical Education and Recreation SA, ACHPER (SA)
 History Teachers Association SA (HTASA)
 The Mathematical Association of NSW (MANSW)
 Tasmanian Association for the Teaching of English (TATE)

“National Guideline on the Diagnosis of Autism Spectrum Disorder (ASD) in Australia”

The Autism CRC has been commissioned by the National Disability Insurance Agency to develop a “National Guideline on the Diagnosis of Autism Spectrum Disorder (ASD) in Australia”. Helen Little from the Joint Council of Queensland Teachers Associations (JCQTA) represents the Australian Professional Teachers Association on the Steering Committee for this project. The National Guideline would define a diagnostic process that is rigorous, accessible, client-centred, clinically acceptable, effective, efficient, and effective for individuals being assessed with ASD. The work of this steering committee has just commenced and will be finalised with the launch of the Guideline in September 2017.

Australian Institute of Teaching and School Leadership (AITSL)

APTA is represented on the AITSL Teaching Expert Standing Committee by Susan Gazis. The group meets 4 times a year – twice face to face and twice by teleconference. The focus of the committee’s work is to provide advice on AITSL projects and ways that AITSL can better engage with its stakeholders. Some projects have been:

Induction – <http://www.aitsl.edu.au/induction>

Classroom Practice Continuum – <http://www.aitsl.edu.au/classroom-practice>

Highly Accomplished and Lead Teacher Network –
<http://www.aitsl.edu.au/certification/halt>

AITSL is currently working on its Principal preparation program. This involves scenarios, leadership pathways and the publication of evaluation reports.

Asia Education Foundation (AEF)

The AEF has developed many resources, developed by teaching associations, which are of value to teachers. APTA is represented on the AEF board.

The AEF’s funding was seriously reduced in 2015 and has had to target its resources and ensure that it operates on a fee for service basis. Some projects that it engages in are:

Go Global

Australia-ASEAN Youth Forum: Designed to deepen students’ understanding of the member countries of the Association of Southeast Asian Nations (ASEAN) and Australia’s relationship with the region through role-play.

UN Global Goals Youth Forum: Deepens students’ understanding of global issues and Australia’s place in the world by workshopping the United Nations (UN) Global Goals and proposing innovative solutions to achieve positive global change.

Open-a-Door to the World

Enables students to take part in interactive activities with Go Global Ambassadors, university students and academics that explore skills, knowledge and networks that can enhance their personal and career goals.

Go Global Ambassadors

School visits by Go Global Ambassadors (formerly Asia Literacy Business Ambassadors) focused on supporting students' career and future planning.

Targeted professional learning

AEF has implemented a 12-month professional learning strategy on a fee-for-service basis involving:

- 22 programs advertised nationally
- 13 programs delivered to 340 educators
- Foci includes an intercultural understanding master class series, use of technology to connect students to the world and support for teachers to plan for teaching and learning that builds global competencies.

Susan Gazis, David Browne and Nerina Pretlove

PROFESSIONAL LEARNING COMMITTEE

REPORT 2016

As Chair of the Professional Learning Committee, it is a pleasure to submit my 2015–2016 report on behalf of all committee members.

Committee Members: Joe Alvaro, Rosalee Whiteley, Denis Mootz, David Browne, Shreela Pradhan

Key Purpose

The outline of the scope of the committee is:

- to develop events via PTC NSW for member associations around governance, treasurer/finance and other matters that are deemed relevant
- to identify and present general PL for members
- to promote PTCplus links for members and non members
- to develop and promote regional PL opportunities

The committee discussed the following points to be pursued at future meetings:

- A calendar of past PTC NSW PL events to be collated and analysed for relevance. A PTC calendar of events could then be published on an annual/six monthly basis. This would inform member associations of predictable events to be included in their calendars
- Members to be surveyed prior to PL events to ensure member needs are being met at the workshops. Evaluations to be carried out at the event as well as electronically afterwards (if required)
- Pre 2004 teachers are an important body to be considered in future events
- PTC NSW conference – is this viable? When?
- If possible, a time to be set aside for committees to meet at the planning day. Meeting face-to-face is desirable and would help committees to start the 2017 year with a positive momentum and sense of direction.

Rosalee Whiteley

RESEARCH COMMITTEE

REPORT 2016

As Chair of the Research Committee it is a pleasure to submit my 2015–2016 report on behalf of all committee members.

Committee Members: Denis Mootz, Jim Sturgiss, Susan Caldis, David Browne

Key Purpose: Identify areas of research; PTA and member papers; Develop publicity options; Develop a partnership with IER; Prepare a written report for the PTC Board of Directors.

The Committee would like to highlight the following outcomes of the 2015–2016 year to PTC NSW:

Our first project is to work with Dr Joan-Mary Hinds around a study of Teacher Motivation and Engagement. The committee met with Dr Hinds in April 2016. At that meeting Dr Hinds outlined her research into employee motivation and engagement, work she has been doing for several years. She then presented how she wanted to work with PTC NSW to look at the measure of teacher motivation and engagement and to isolate the drivers in teachers.

The research committee agreed to support this research and has assisted in the formation of four focus groups. The focus groups were held in last week of July 2016. Groups of seven to ten teachers met with Dr Hinds for 90 minutes and answered a range of questions. Questions which allowed staff to explain their feelings and experiences freely. Each of the four sessions were recorded with each participant accepting that the content of the sessions was to remain confidential, protecting their right to speak openly and frankly.

Responses from each focus group are to be analysed and will help inform a set of items which will form an online questionnaire. It is planned to have a mass questionnaire available for testing in Term 4 2016. The survey would be provided for teachers to voluntarily complete, providing some useful data around the topic of Motivation and Engagement.

The committee has received a short report from Dr Hinds on her progress and is interested in the next stages of the project.

Susan Caldis

EVENTS COMMITTEE

REPORT 2016

As Chair of the Events Committee it is a pleasure to submit my 2015–2016 report on behalf of all committee members.

Committee Members: Denis Mootz, Susan Gazis, Cheryl Brennan, Bernadette Motulalo

Key Purpose: Identify events for the year eg. Presidents Dinner; Annual Presentation Evening; prepare budgets for finance committee; present a written report for PTC NSW Board of Directors.

The Committee would like to highlight the following outcomes of the 2015–2016 year to PTC NSW:

The first event for 2016 was the Presidents' Dinner. Historically this event was held as a formal dinner to welcome member Association President's and Executive to the new year! The formal dinner will be moved and attached to the Presentation Evening, making it an even more prestigious event.

A decision was made to change this event into a cocktail party format for 2016. It was planned that a cocktail party function would allow for more networking and greater opportunity for participants to gather and share stories in a relaxed setting.

NSW Parliament House Sydney was selected. Sponsorship from Education Perfect was accepted to assist with the costs. The secretariat organised the evening. The guest speaker was Dr Catherine Keenan. As the co-founder and executive director of the Sydney Story Factory, Catherine has helped thousands of primary and high school students express themselves through writing and storytelling. Catherine, who has a doctorate in English literature from Oxford University, is focused on helping people from Indigenous and non-English speaking backgrounds, but everyone is welcome to attend the Sydney Story Factory and all classes are free. Catherine was also Australia's Local Hero 2016.

The evening went smoothly and received positive feedback from participants.

Our second event is the annual Presentation Evening. The committee has agreed to host a dinner as part of the evening in 2016. The venue, Doltone House – Hyde Park, Elizabeth Street Sydney provides a central location with a variety of transport options. The secretariat will handle the bookings and practicalities of the evening. The Doltone House CEO has provided sponsorship of the venue hire fee of \$4440. This gala event is hoped to attract a significant group of participants from member associations and all areas of NSW education. We are delighted to be able to welcome our patron Professor The Honourable Dame Marie Bashir AD CVO; The Secretary of the Department of Education, Mr Mark Scott and the President of the Board of Studies, Teaching and Educational Standards (BOSTES) Mr Tom Alegounarias.

Denis Mootz

COMMUNICATIONS COMMITTEE

REPORT 2016

As Chair of the Communications Committee it is a pleasure to submit my 2015–2016 report on behalf of all committee members.

Committee Members: Denis Mootz, Wendy Kon, Jill Sillar, David Browne

Key Purpose: Identify opportunities; prepare media releases; publish President's report; website and on-line presence; media training; prepare budgets as required for Finance committee; present written report to PTC NSW Board of Directors.

The Committee would like to highlight the following outcomes of the 2015–2016 year to PTC NSW:

The committee identified the need for a full style guide to cover all PTCNSW communications including web; email; publishing both electronic and digital.

Jill Sillar mentioned a basic style guide existed which can be further developed.

The committee endorsed the continued production of the PTC NSW E-Letter, which was to be newsy and highlight the work of not only PTC NSW but BOSTES and member associations. The semester PL calendar of member associations is a feature of every E-Letter.

The need for a new website became a focus for this committee as the current site is very difficult to manage and needed updating. A new look and more user friendly streamlined website was to be developed and is expected to be fully live for 2017.

The committee has also looked at the distribution of communications from the PTC and is working to improve the tracking and checking of emails of member associations Presidents and Executive. Information will be harvested from the updated AGM forms each year.

The inclusion of the PTC NSW Patron was added to all emails from PTC NSW.

PTC NSW presence on a wide on-line media platform is also a priority utilising Twitter and Linked-In to promote PTC NSW and member associations.

The committee is committed to improving the level of communication into 2017, particularly as we move to a new website.

David Browne

MEDIA AWARDS COMMITTEE

REPORT 2016

As Chair of the Media Awards Committee it is a pleasure to submit my 2015–2016 report on behalf of all committee members.

Committee Members: Brian Elliott (Chair), Bernice Beechey, David Browne, Lorraine Chaffer, Shreela Pradhan

Key Purpose: Revise and refine the criteria for the Media Awards and Regional Media Awards for 2016; review processes for distributing information about the awards in local and regional press; prepare nominations for board members to be used in deciding on the 2016 winners.

The Committee would like to highlight the following outcomes of the 2015–2016 year to PTC NSW:

In preparation for the Media Award and Regional Media Award to be presented in 2016 the committee has:

- confirmed that both a Media Award and Regional Media Award can be awarded in 2016
- reviewed and revised guidelines for awarding the annual Media Award and Regional Media Award
- reviewed and revised the nomination form to reflect the updated guidelines
- confirmed that digital media can be eligible for nomination based on the development of original content
- recognised that awards will only be made to entries which are of a high standard
- monitored the distribution of information about the awards to member associations and media organisations
- informed the PTC NSW Board of the processes to be used to select the 2016 winners

The contribution of all committee members in revising the processes used in selecting the winning media awards is greatly appreciated. Procedures have been put into place to ensure that all entries will be reviewed with criteria which have been clearly communicated as part of the nomination process. Despite some technological challenges, the committee has been able to operate efficiently and provide thoughtful feedback to the Board. The committee is confident the community will continue to recognise the prestige of the Media Award and Regional Media Awards.

Brian Elliott



PROFESSIONAL TEACHERS' COUNCIL NSW SECRETARIAT OVERVIEW 2016

ADMINISTRATION

The Professional Teachers' Council NSW (PTC NSW) Administration provided professional services in 2016, continuing the quality of services to the PTC NSW Board of Directors and all member associations.

Following a rigorous search of potential commercial rental options, PTC NSW relocated on the 19 July 2016 to premises at 25 Nyrang Street, Lidcombe. PTC NSW administration along with the English, Geography, and Drama Teachers' Associations share the Nyrang St offices. The new facility will enable PTC NSW and its member associations to continue to deliver high quality professional development to teachers from all sectors. The complex offers hot desk and office options; meeting rooms and small event space for all member associations to access.

Our reputation for high quality, cost effective publications and graphic design work continues to impress and is available to all member associations and external entities. Work includes association journals, bulletins and newsletters for distribution as either a print publication and/or uploaded as digital content accessible to association members. PTC NSW E-letter continues to help inform and promote member associations of the work carried out by PTC NSW on behalf of association's members as well as highlighting member associations through feature articles, and professional learning opportunities. These publications are also made available in a format suitable for association websites.

The Department of Education continues to support the distribution of the E-letter via SchoolBiz reaching all NSW Department of Education teachers.

An increasing number of associations are utilising the PTC NSW secretariat to administer their conferences as a cost effective way to manage large events. Services include, but are not limited to: sourcing venue options, caterers, and accommodation alternatives; advertising options; event registrations – including online registrations; sign-in clerical assistance on the day(s) of the event; design concepts for flyers, registration forms, banners, workbooks, programmes, name tags, signage and welcome screens. PTC NSW is very pleased to announce that a PTC NSW Conference App will be made available for all associations to use for conferences and student days. The app incorporates the exclusive ability to promote association events across a year, directly to all electronic devices. PTC NSW will also be making the app available to all associations' national bodies as well as corporate clients.

TECHNOLOGY

Our hardware and software upgrade in 2015 has assisted the secretariat through improved reliability and efficiencies, and is further enhanced with NBN connectivity at our new address.

PROFESSIONAL LEARNING

Professional learning opportunities across 2016 into 2017 include Office upgrades for PTC NSW administration staff. The following is a summary for PL attended in 2016.

Mai Mai Lin (PTC NSW Accounts):

- Australia Wide Taxation – Payroll training
- Westpac – Financial management
- Institute of Public Accountants – Understanding Financial Reports from a BAS Agent/Bookkeeper Perspective

Treasurer's Workshop – PTC NSW held a two-hour workshop covering all things Financial and Governance for association members. Following the workshop several member associations have organised follow-up individual sessions to ensure compliance.

PTC NSW PROJECTS

Ongoing PTC NSW projects include:

- Introduction of a new PTC NSW Conference App; MyScience (GEMS), Primary Teachers' Network; Australian Professional Teachers' Association (APTA), History Teachers' Association NSW, Drama NSW, and the Asia Education Teachers' Association websites.
- All aspects of PTC NSW Association work including: Board Meetings and Planning Days, Presidents' Cocktail Party, Presentation Evening, Forums and Consultation sessions, The BOSTES/PTC NSW Professional Learning Committee Information feedback for member associations, All Schools Fax-streams, Semester 1 and Semester 2 Professional Learning Calendars, support and assistance across a range of matters particular to individual associations.
- @PTC NSW, a digital communication from the President of PTC NSW provided to all member association presidents' which continues to inform and outline work carried across each semester, particularly outlining BOSTES and DoE meeting outcomes.
- Our fledgling Professional Learning delivery model – PTCplus has grown. The model has provided quality, teacher created, teacher delivered professional learning experiences for a number of PTCplus registered schools, alongside the already excellent professional learning experiences carried out by member associations across NSW. Our PTCplus registered schools have the advantage of designing school based professional learning experiences targeting their specific PL needs. PTCplus will continue to provide tailored events, utilising

member association's expertise. PTCplus will also be representing all member associations while working in schools to further promote the profile of member associations and membership advantages for all associations to teachers. PTCplus is an exciting innovation for PTC NSW providing cost effective, teacher created and presented quality professional learning directly with schools across all sectors and regions of NSW.

- The support provided by PTC NSW has also assisted interest groups to formally establish new associations.

The Professional Casual Teachers' Association NSW, is a new association created to support all casual teachers across NSW. The creation of this association will assist casual teachers to have a combined forum as they prepare for their accreditation requirements from 2018.

The focus of the PCTA NSW is to provide access to quality, reasonable cost professional learning for casual teacher's across all sectors and across NSW. An on-line forum set to be released for 2017 will help link casuals across the state, providing a voice for teachers in a variety of casual and temporary positions in NSW Schools.

- Great Teaching, Inspired Learning provided an opportunity for PTC NSW to work with member associations Mathematics, Science, English, History and Geography to produce five modules designed for on-line access through BOSTES and PTC NSW. These modules, to be released for 2017 will support teachers returning to the classroom after five years absence, teachers from interstate or overseas and teachers teaching outside their preferred KLA.
- A PTC NSW supported BOSTES Accreditation workshop provided member associations with a practical evening designed to assist with the accreditation of courses and the work required to ensure BOSTES accreditation. Mr Paul Martin represented Mr Tom Alegounarias, President of the Board of Studies, Teaching and Educational Standards NSW (BOSTES) addressed several issues the Board is currently working through, including accreditation for all teachers; recent changes to the HSC, as announced by the Education Minister, as well as the upcoming Ministerial Review of BOSTES.

2016 PRESIDENTS' DINNER

For 2016 the Annual Presidents' Dinner was held as a cocktail party at the NSW Parliament House. The new style event, provided a more fluid opportunity to mingle with guests from a wide range of educational backgrounds, member association Presidents and Executive representatives and the PTC NSW Directors. The evening provides a valuable opportunity for the profession to meet and develop professional ties with other member associations in a collegial social setting.

Guest speaker, Dr Catherine Keenan, Australia's Local Hero 2016



Dr Denis Mootz, President PTC NSW welcomed dignitaries and guests attending this important annual event. Guests included: Mr Tom Alegounarias – President of the Board of Studies, Teaching and Educational Standards NSW; Sue Pike – Association of Independent Schools; Mrs Rosalie Nott – Assistant Director, Education Policies: Catholic Education Commission NSW; Mr John Quessy – Secretary Independent Education Union; Ms Amy Cotton – Project Officer, Independent Education Union; Mr Greg Prior, Deputy Secretary, SO&P – Department of Education; Mr John Peacock – General Manager Associations Forum; Ms Dorothy Hoddinott – Past President, Professional Teachers' Council NSW, Mr Tim Vaughn – Global Brand Manager Education Perfect; Mr Patrick Lee – Great Teaching Inspired Learning.

The President, Dr Denis Mootz acknowledged the vital role that associations play in the professional development and support of teachers across NSW.

The guest speaker for the evening was Dr Catherine Keenan, co-founder and executive officer of Sydney Story Factory and *Australia's Local Hero* for 2016. A former journalist, arts writer and literary editor Catherine has helped thousands of primary and high school students express themselves through writing and storytelling.

TREASURERS' WORKSHOP

On Monday 17 May 2016 the Professional Teachers' Council NSW held a Practical Treasures' Workshop for member associations. During the three-hour workshop participants were introduced to the concepts of compliance around a treasure's responsibilities and why it's essential for organisations to have clear processes around how they monitor and report their finances. Governance and compliance were also key messages of the presentation. The information was particularly useful for newly appointed association treasurers. Several associations have received individual follow-up session.

NSW BOARD OF STUDIES BOARD, TEACHING AND EDUCATIONAL STANDARDS (BOSTES) CONSULTATION COMMITTEES (BCC)

The Professional Teachers' Council NSW appreciates the BOSTES invitation for representatives of member associations to continue to participate in the important work undertaken by the BOSTES Board Curriculum Committees.

David Browne
Executive Officer
PTC NSW



PTC NSW ANNUAL AWARDS

The Professional Teachers' Council NSW presents a number of annual awards to individuals and organisations that have contributed to enhancing the status of teaching as a profession.

PRESIDENT'S AWARD

The President's Award was presented for the first time in 2015. This award recognises exceptional service to the Board of the Professional Teachers Council NSW by an employee or contractor and is only presented on rare occasions.

2015 RECIPIENT:

Kim Tsolakis

EXCEPTIONAL SERVICE AWARD

The Exceptional Service Award is presented to people for their distinguished service over a significant period of time to the Professional Teachers' Council NSW, member professional associations and education in NSW.

2015 RECIPIENTS:

Dr Anne Forbes

Dr Anne Power



Dr Anne Forbes (centre) pictured with the Hon Linda Burney MP and Paul Martin, Executive Director, Teaching Standards & Strategic Policy, BOSTES NSW



Dr Anne Power (centre) pictured with the Hon Linda Burney MP and Paul Martin, Executive Director, Teaching Standards & Strategic Policy, BOSTES NSW

MEDIA AWARD

The Professional Teachers' Council NSW Media Award is presented to a person or persons working in the media industry for the positive portrayal of the work of teachers and schools and their recognition of the value to the community of teaching as a profession.

2015 RECIPIENT:

Natasha Bitá, National Education Correspondent, *The Australian* –
What makes a good teacher?



Natasha Bitá (right) pictured with the Hon Linda Burney MP

OUTSTANDING PROFESSIONAL SERVICE AWARD

This award is made by the Professional Teachers' Council NSW on behalf of professional associations in recognition of the voluntary work undertaken by committee members of professional teachers' associations. The award recognises an individual committee member's outstanding professional contribution to education in NSW made through a professional teachers' association.

2015 RECIPIENTS:

Asia Education Teachers' Association – Pauline Sheppard

Australian Council for Health, Physical Education and Recreation NSW –
Dominique Sidaros & Susan Torr

Australian Society for Music Education NSW – Kate Hargreaves

Careers Advisers Association of NSW & ACT Inc – Jenine Smith

Chinese Language Teachers' Association NSW – John Meng

English Teachers Association of NSW – Kerri-Jane Burke, Imelda Judge
& Stefanie Lia

Geography Teachers' Association of NSW – Paul Alger & Susan Caldis

Gifted and Talented Secondary Teachers' Association – Anne McCallum

History Teachers' Association of NSW – Anne Gripton & Robyn McKenzie

ICT Educators NSW – Todd Beilby

Institute of Industrial Arts Technology Education – Ian McKenzie
& John Perdriau

Legal Studies Association – Florence Adamou & Kate Kempthorne

Marine Teachers' Association of NSW – Damian Coase

Mathematical Association of NSW – Catherine Attard

Modern Language Teachers' Association – Gillian Cordy & Merryl Wahlin

NSW PDHPE Teachers' Association – Leif Smith

Orff Schulwerk Association of NSW – Michele Ellis

Science Teachers' Association of NSW – George Pinniger & James Sturgiss

Society and Culture Association of NSW – Emma Davidge

AFFILIATE MEMBER CATEGORY:

Kodály Music Education Institute of Australia (NSW) – Catriona Turnbull

CERTIFICATE OF APPRECIATION

Presented by the Professional Teachers' Council NSW in recognition of the associations' voluntary contributions during the year to quality education, the students of NSW and the teaching profession.



Professional Teachers' Council NSW, 25 Nyrang St Lidcombe NSW
• PO Box 699 Lidcombe NSW 1825 • Phone 02 9716 0378 • Fax 02 9564 2342
• Email admin@ptc.nsw.edu.au • Web www.ptc.nsw.edu.au