



2015

ANNUAL REPORT

Cover image –
2014 HSC Major Work by E J Burns

Our thanks to the Board of Studies Teaching and Educational Standards (BOSTES) for the use of this ArtExpress image

THIRTY SECOND ANNUAL REPORT
OF THE
PROFESSIONAL TEACHERS' COUNCIL
NEW SOUTH WALES



October 2015

Building capacity to support teacher quality

Page 1 image –
2010 HSC Major Work by K T Wilson

Our thanks to the Board of Studies Teaching and Educational Standards (BOSTES) for the use of this ArtExpress image

CONTENTS

Statement of Purpose	4
Member Associations	4
PTC NSW Activities Map	5
President's Report	7
Directors' Report	11
Financial Statements	19
Directors' Declaration	21
Statement of Comprehensive Income for the Year Ended 30 June 2015	22
Statement of Financial Position as at 30 June 2015	23
Statement of Cash Flow for the Year Ended 30 June 2015	24
Statement of Changes in Equity for the Year Ended 30 June 2015	25
Notes to the Financial Statements for the Year Ended 30 June 2015	26
Auditor's Independence Declaration	33
Independent Auditor's Report	34
Accountant's Report to the Members	36
Income & Expenditure Statement for the Year Ended 30 June 2015	37
Abbreviated Income & Expenditure Statement for the Year Ended 30 June 2015	40
Treasurer's Report	43
External Committee and PTC NSW Board Subcommittee Reports	49

STATEMENT OF PURPOSE

The Professional Teachers' Council of NSW provides leadership to advance the teaching profession

In order to achieve our purpose, we will:

1. Ensure quality services for member associations
2. Provide effective governance
3. Develop and advocate position statements
4. Implement effective communication strategies
5. Manage strategic projects

MEMBER ASSOCIATIONS

Aboriginal Studies Association
Association for Studies of Religion
Association for Teaching English to Speakers of Other Languages NSW Inc
Australian Council for Health, Physical Education and Recreation (NSW)
Australian Psychologists & Counsellors in Schools
Australian Society for Music Education (Inc) NSW Chapter
Australian Teachers of Media (NSW)
Careers Advisers Association of NSW Inc
Chinese Language Teachers' Association
Classical Languages Teachers' Association
Drama NSW
Economics and Business Educators NSW
English Association Sydney Branch
English Teachers Association NSW
Geography Teachers' Association of NSW Inc
Gifted and Talented Secondary Teachers' Association
History Teachers' Association of NSW
Home Economics Institute of Australia (NSW Division)
ICT Educators of New South Wales
Institute of Industrial Arts Technology Education
Legal Studies Association of NSW Inc
Marine Teachers' Association of NSW Inc
Mathematical Association of NSW Inc

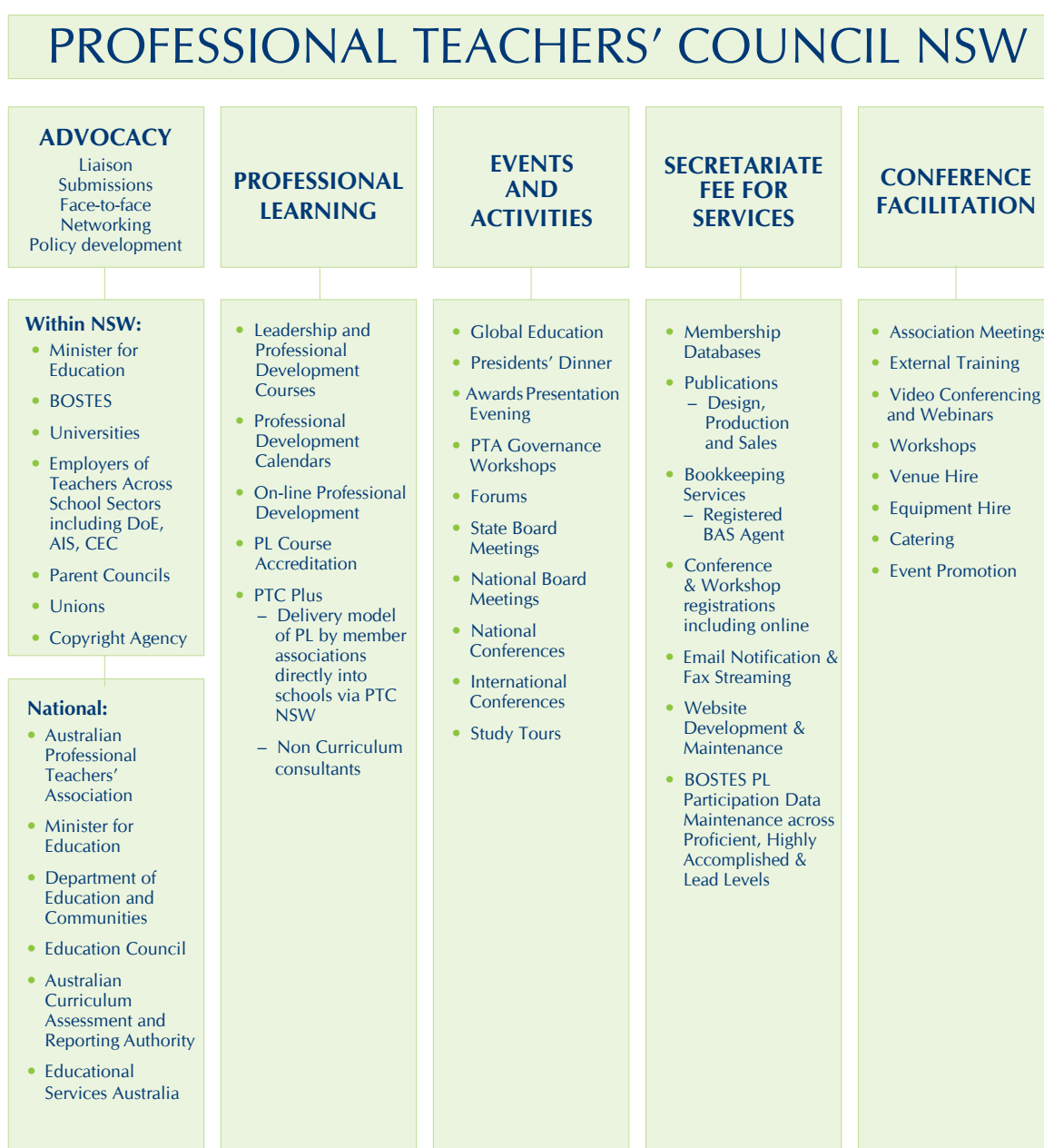
Metropolitan East Social Science Teachers' Association
Modern Languages Teachers' Association NSW
NSW Association of Agriculture Teachers Inc
NSW Association of French Teachers
NSW PDHPE Teachers' Association
Orff Schulwerk Association of NSW
Primary Teachers' Network Inc
Professional Association for Learning Support Inc
Professional Casual Teachers' Association NSW
Science Teachers' Association of NSW Inc
Society and Culture Association of NSW
Student Welfare & Personal Development Association of NSW
Technology Educators' Association of NSW Inc
Technology in Primary Schools NSW
Visual Arts & Design Educators' Association (NSW)

AFFILIATED ORGANISATIONS

Australian Band & Orchestra Directors' Association
Asia Education Teachers' Association (Aust) Inc
Australian Literacy Educators' Association NSW
Kodály Music Education Institute of Australia (NSW)
NSW Institute for Educational Research
Primary English Teaching Association Australia
School Administrative & Support Staff Professional Association (NSW)

PTC NSW ACTIVITIES MAP

The Professional Teachers' Council NSW (PTC NSW) is the peak body for professional teachers' associations in NSW with 45 member associations. Established in 1973 it represents teachers at all levels of the education system, early childhood to tertiary. PTC NSW represents both government and non-government sectors, in all key learning, cross-curricula and leadership areas. PTC NSW provides an independent and non-partisan forum for the discussion of education policy and has a commitment to the professional development of teachers and to enhancing the professionalism of teachers and the quality of education in NSW.



Page 7 image –
2012 HSC Major Work by K Hart

Our thanks to the Board of Studies Teaching and Educational Standards (BOSTES) for the use of this ArtExpress image

PRESIDENT'S REPORT



For the Year Ended 30 June 2015



PRESIDENT'S REPORT 2015

DR DENIS MOOTZ

The last 12 months have been challenging for the Board and the Executive of PTC NSW, as they have worked with the Office of the Board of Studies and Teacher Education Standards to implement aspects of the *Great Teaching and Inspired Learning* paper. The challenges have come with the re-focusing of PTC NSW Board and the Secretariat priorities and energies to meet the demands of the initiative to produce Professional Learning courses for teachers in order to satisfy the requirements of *GTIL* clauses 8.1 and 16.4. This process has involved unexpected changes in personnel, revised timelines and contractual negotiations that have caused lost opportunities and delayed the planned implementation of these *GTIL* initiatives.

The good news however is that PTC and five affiliated Professional Teacher Associations are currently working with BoSTES to produce a number of discipline based “refresher” courses for teachers returning to the profession after an absence of five years. It is hoped that these will be the first of many such opportunities to produce courses, designed by teachers for teachers, as the implementation of *GTIL* 8.1 and 16.4 develops momentum. PTC NSW wishes to acknowledge the continuing support and commitment of BoSTES President Tom Alegounarias for the concept of “teacher driven, teacher designed and teacher delivered” Professional Learning in NSW.

The PTC Executive has also been working to establish a partnership with BoSTES, the NSW Department of Education, the Catholic Education Commission and the Independent Education Union to establish a conduit for cross-sectoral Professional Learning. PTC NSW Executive has argued that this will save time and money for all authorities by minimising unnecessary competition and providing economies of scale. PTC NSW would like to thank Gerry McCloughan from NSW Department of Education and Paul Rodney from the Catholic Education Commission for their continuing support in this endeavour. This initiative should allow us to maintain the primary role of affiliated PTAs in delivering affordable and relevant Professional Learning for teachers, as *GTIL* 16.4 becomes a reality for all teachers in NSW.

Perhaps the most exciting and promising initiative of 2015 has been the introduction of a new secretariat facility for Professional Learning. *PTCplus* is the brain child of our Executive Officer, David Browne, and will offer schools the opportunity to design, tailor make if you like, an annual Professional Learning plan in consultation with PTC which will then involve the appropriate PTAs, and a team of consultants, to provide fully accredited Professional Learning specific to the school's annual plan. We have a number of schools involved already in our

pilot scheme and hope to produce some case studies as exemplars for the rolling out and full implementation of *PTCplus* in 2016. Once in place *PTCplus* has the potential to meet the long term implications of *GTIL* and to radically change the provision of teacher Professional Learning in NSW.

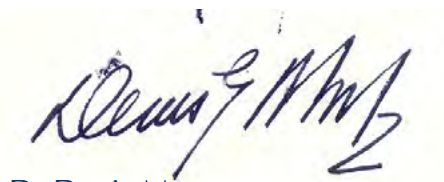
A significant challenge for PTC NSW for both present and future operations is to remain financially viable. Since we were forced into the commercial rental market our sustainability has been tested. The withdrawal of federal funding for, and the winding down of the Global Education Project has also required significant adjustment. As a consequence, a continuing priority for PTC NSW is a search for more affordable accommodation for the Secretariat and for a potential conference space. There will be some tough decisions ahead for PTC NSW and its affiliates as further economies become necessary.

During 2015 PTC NSW ran the usual annual program of events. The Treasurers' Workshop was well attended and well received. The 25th Annual Presidents' Dinner was a successful evening with special guest speaker Dr Roslyn Arnold being well received and reviewed by those present. The Annual Awards Night was a highlight also. Throughout the year the Secretariat has maintained high quality provision of a full range of services in the areas of finance, IT support and desktop publishing for our affiliates and associates. We have also introduced a quarterly *President's Letter* in an effort to address the issue of communication with affiliates and members, and to attempt to lift or improve PTC NSW's "profile" among teachers in all sectors.

The Board and Executive would like to congratulate our office staff, the Secretariat, on the spirit with which they have coped with changes to their roles and the inevitable changes to work focus and priorities as office duties and structures have evolved since the employment of a new Executive Officer and the winding down of Global Education projects. We offer a particular thank you to David Browne, our new Executive Officer, who has displayed enormous energy and commitment already in this most demanding position. We hope David will be with us for a long time.

I would like to acknowledge the support and work of all Board members but particularly my Executive colleagues, Vice Presidents Nerina Pretlove and Rosalie Whiteley, Secretary Joe Alvaro and Treasurer Anne Thomas, who have coped with significant changes to our operation, and who have stepped up when necessary to "fill the breach", in what has been a difficult and eventful year.

On behalf of the students and teachers of PTC NSW I would like to record our gratitude to retiring Director, Anne Power, for her contribution to the Board of PTC NSW and for her work as Chair of the Professional Learning Committee.



Dr Denis Mootz

President

21 October 2015

DIRECTORS' REPORT



For the Year Ended 30 June 2015

Page 11 image –
2012 HSC Major Work by R Dreyfus

Our thanks to the Board of Studies Teaching and Educational Standards (BOSTES) for the use of this ArtExpress image

DIRECTORS' REPORT FOR THE YEAR ENDED 30 JUNE 2015

PROFESSIONAL TEACHERS' COUNCIL NSW

Your directors present this report on the company for the financial year ended 30th June 2015.

DIRECTORS

Directors have been in office since the start of the financial year to the date of this report unless otherwise stated. The names of the directors in office at any time during or since the end of the year.

JOE ALVARO	Secretary of the Board. President of the Economics and Business Educators NSW.
BERNICE BEECHEY	Member of the Board. Member of the Executive, The Mathematical Association of NSW, Chair of the Primary Mathematics Association.
CHERYL BRENNAN (APPOINTED AUG 2015)	Member of the Board. (As of AUG '15). Vice-President of Economics and Business Educators.
JENNIFER CURTIS (NOV '14 – APR '15)	Former Member of the Board (NOV '14 – APR '15). President of Asia Education Teachers' Association. Member of the Primary Teachers' Network
DIANE DUNLOP	Member of the Board. Secretary and Editor Asia Education Teachers' Association. Member of Asian Social Syllabus Committee.
BRIAN ELLIOTT	Member of the Board. Member of the Legal Studies Association
ANNE FORBES	Member of the Board. President of the Primary Teachers' Network.
SUSAN GAZIS	Member of the Board. Treasurer of the English Teachers' Association NSW. President of the Australian Professional Teachers' Association. NSW Institute of Teachers observer on the PTC NSW Professional Learning Committee.
MICHELLE JENSEN (NOV '14 – FEB '15)	Former Member of the Board (Nov '14 – FEB '15). President of School Library Association NSW.
WENDY KON	Member of the Board. Treasurer of Drama NSW.
JOHN MENG	Member of the Board. President of the Chinese Language Teachers' Association. Treasurer of the Mathematical Association of NSW.
DENIS MOOTZ	President of the Board. Treasurer and Journal Editor of the History Teachers' Association. Hon Secretary of the History Teachers' Association of Australia.

DIRECTORS

JUDY PILCH (NOV '14 – MAR '15)	Former Treasurer of the Board (NOV '14 – MAR '15). Member of the Board. Secretary of the Asia Education Teachers' Association. Treasurer of the St George Australian College of Education.
ANNE POWER	Member of the Board, Chair of the PTC NSW Professional Learning Committee March 2013 – Present. Member of Australian Society for Music Education (NSW). Chair of PTC NSW Awards Committee.
NERINA PRETLOVE	Vice-President of the Board, member of the Executive. Member of the PTC NSW Professional Learning Committee. President of the Professional Casual Teachers' Association. Australian Professional Teachers Association NSW representative.
MARGARET SHEPHERD (APPOINTED AUG 2015)	Member of the Board (As of AUG '15). Treasurer of the Science Teachers' Association of NSW.
JIM STURGISS	Member of the Board. Member of the PTC NSW Professional Learning Committee. Member of Science Teachers Association of NSW Inc.
ANN THOMAS	Treasurer of the Board (Appointed May '15). Member of the Executive, Mathematical Association of NSW.
KIM TSOLAKIS (APPOINTED MAR '15)	Member of the Board (As of MAR '15). Director of Global Education Project NSW. Treasurer of Primary Teachers' Network. Member of Drama NSW.
ROSALEE WHITELEY	Vice-President of the Board. Member of the English Teachers' Association NSW – Branches Manager and Western Plains representative on the ETA Regional Committee.

DIRECTORS' MEETINGS

Directors' attendance at Board Meetings from 17th November 2014 to 12th October 2015

	Nov 17/14	Feb 19/15	Mar 09/15	Apr 27/15	Jun 01/15	Jul 20/15	Aug 24/15	Oct 12/15
JOE ALVARO	E	✓	✓	✓	✓	E	✓	✓
BERNICE BEECHEY	✓	✓	E	✓	✓	-	✓	✓
CHERYL BRENNAN (Appointed AUG 2015)							✓	✓
JENNIFER CURTIS (NOV '14 – APR '15)	A	✓	-					
DIANE DUNLOP	✓	✓	✓	✓	✓	✓	✓	✓
BRIAN ELLIOTT	✓	✓	✓	A	✓	✓	✓	✓
ANNE FORBES	A	✓	✓	✓	✓	✓	E	E
SUSAN GAZIS	A	✓	✓	✓	✓	✓ _C	✓ _C	✓
WENDY KON	✓	A	✓	✓ _C	✓ _C	✓ _C	E	✓ _C
JOHN MENG	A	E	✓	✓	A	✓	✓	E
DENIS MOOTZ	✓	✓	✓	✓	✓	✓	✓	A
JUDY PILCH (NOV '14 – MAR '15)	✓	✓						
ANNE POWER	✓	✓	✓	✓	A	E	✓	✓
NERINA PRETLOVE	✓	✓	✓	✓	E	✓	✓	✓
MARGARET SHEPHERD (Appointed AUG 2015)							✓	✓
JIM STURGISS	✓	✓	✓	✓	✓	✓	✓	A
ANN THOMAS	✓	✓	✓	✓	✓	✓	✓	✓
KIM TSOLAKIS (Appointed MAR 2015)			✓	✓	✓	✓	✓	✓
ROSALEE WHITELEY	✓ _C	✓ _C	✓	A	✓ _C	✓ _C	✓ _C	✓ _C

KEY –

- | | | | |
|----------------|---|---|---------------------|
| ✓ | Present | * | On PTC NSW business |
| ✓ _C | Present Conference Link | L | Leave of absence |
| A | Apologies | - | Non attendance |
| E | Apologies due to school or association business or extenuating family circumstances | | |

OPERATING RESULT

The deficiency of the company for the financial year amounted to:
Year ended 30 June 2015 \$295,964

REVIEW OF OPERATIONS

A review of operations for the Professional Teachers' Council NSW during the financial year have resulted in the conclusion that the principal activities of the company are to act as a coordination and consultancy body for the professional teachers associations in New South Wales. No significant change in the nature of these activities occurred during the financial year.

SIGNIFICANT CHANGES IN THE STATE OF AFFAIRS

Global Education funding ended in December 2014 and project ends December 2015.

PRINCIPAL ACTIVITIES

In the opinion of the Directors of the Professional Teachers' Council NSW, there have been no significant changes in the operation of the Professional Teachers' Council NSW in the past twelve months. The Council has continued to act as a co-ordination and consultancy body for professional teachers' associations in NSW.

AFTER BALANCE DATE EVENTS

No matters or circumstances have arisen since the end of the financial year which significantly affected or may significantly affect the operations of the company, the results of those operations, or the state of affairs of the company in subsequent financial years.

FUTURE DEVELOPMENTS

The likely developments in the operations of the company and the expected results of those operations in future financial years are expected to continue as previously and be a coordination and consultancy peak organisation that provides services to member associations.

ENVIRONMENTAL ISSUES

The company's operations are not regulated by any significant environmental regulation under a law of the Commonwealth of or a State or Territory.

DIVIDENDS

The company was incorporated as being limited by guarantee. Under the original Memorandum & Articles and supported by previous and current Corporations law, the company is specifically precluded from paying any dividends to members.

OPTIONS

As the company is limited by guarantee, shares and options are not available to members or investors.

DIRECTORS' INTERESTS IN SHARES OF THE COMPANY OR RELATED BODIES CORPORATE

No director has a financial interest in the company or a financial interest in any of the company's member associations.

DIRECTORS' BENEFITS

During the year Kim Tsolakis, a director of the Company since 16 February 2015, was employed as Manager of "The Global Education Project". During the period 16 February 2015 to 30 June 2015 the wage amounted to \$15,572.80. Prior to this period Kim Tsolakis had been employed as General Manager of the Company.

Apart from the above no director has received or has become entitled to receive, during or since the financial year, a benefit because of a contract made by the company or related body corporate with a director, a firm which a director is a member or an entity in which a director has a substantial financial interest.

This statement excludes a benefit included in the aggregate amount of emoluments received or due and receivable by directors shown in the company's accounts, or the fixed salary of a full-time employee of the company or related body corporate.

INDEMNIFYING OFFICER OR AUDITOR

No indemnities have been given or agreed to be given or insurance premiums paid or agreed to be paid, during or since the end of the financial year, to any person who is or has been an officer or auditor of the company.

PROCEEDINGS ON BEHALF OF COMPANY

No person has applied for leave of Court to bring proceedings on behalf of the company or intervened in any proceedings to which the company is a party for the purpose of taking responsibility on behalf of the company for all or any part of those proceedings. The company was not a party to any such proceedings during the year.

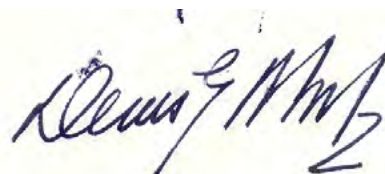
AUDITOR'S INDEPENDENCE DECLARATION

A copy of the auditor's independence declaration as required under section 307C of the Corporations Act 2001 has been included.

Signed in accordance with a resolution of the Board of Directors:



Ann Thomas
Treasurer



Denis Mootz
President

Dated this 21st day of October 2015

Page 19 image –
2013 HSC Major Work by B D Chen

Our thanks to the Board of Studies Teaching and Educational Standards (BOSTES) for the use of this ArtExpress image

FINANCIAL STATEMENTS



For the Year Ended 30 June 2015

DIRECTORS' DECLARATION PROFESSIONAL TEACHERS' COUNCIL NSW

ABN 48 002 220 957

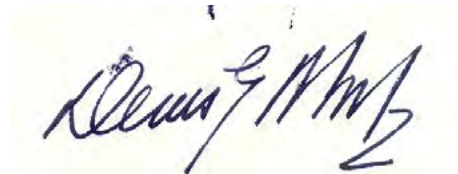
The directors of the company declare that:

1. The financial statements and notes are in accordance with the Corporations Act 2001 and:
 - (a) comply with Accounting Standards and the Corporations Regulations; and
 - (b) give a true and fair view of the company's financial position as at 30 June 2015 and of its performance for the year ended on that date:
2. In the directors' opinion, there are reasonable grounds to believe that the company will be able to pay its debts as and when they become due and payable.

This declaration is made in accordance with a resolution of the Board of Directors.



Ann Thomas
Treasurer



Denis Mootz
President

Dated this 21st day of October 2015

PROFESSIONAL TEACHERS' COUNCIL, NSW**ACN - 002 220 957****STATEMENT OF COMPREHENSIVE INCOME****FOR THE YEAR ENDED 30 JUNE, 2015**

	<u>NOTE</u>	<u>2015</u> \$	<u>2014</u> \$
Revenues from ordinary activities	2	678,816	795,850
Marketing expenses		-	-
Occupancy expenses		(71,984)	(66,033)
Administration expenses		(902,796)	(697,166)
		-----	-----
Net (deficiency)/surplus from ordinary activities	3	(295,964)	32,651
Other comprehensive income		-	-
		-----	-----
Total comprehensive income attributable to members of the entity		(295,964) =====	32,651 =====

The accompanying notes form part of the financial statements.

PROFESSIONAL TEACHERS' COUNCIL, NSW**ACN - 002 220 957****STATEMENT OF FINANCIAL POSITION****AS AT 30 JUNE, 2015**

	<u>NOTE</u>	<u>2015</u> \$	<u>2014</u> \$
CURRENT ASSETS			
Cash and Cash Equivalents	4	486,349	752,399
Trade and Other Receivables	5	64,909	75,785
		-----	-----
TOTAL CURRENT ASSETS		551,258	828,184
		-----	-----
NON-CURRENT ASSETS			
Plant and Equipment	6	16,743	22,713
		-----	-----
TOTAL NON-CURRENT ASSETS		16,743	22,713
		-----	-----
<u>TOTAL ASSETS</u>		568,001	850,897
		-----	-----
CURRENT LIABILITIES			
Trade and Other Payables	7	133,363	97,375
Provisions	8	12,028	54,233
		-----	-----
TOTAL CURRENT LIABILITIES		145,391	151,608
		-----	-----
NON-CURRENT LIABILITIES			
Provisions	8	34,069	14,784
		-----	-----
TOTAL NON-CURRENT LIABILITIES		34,069	14,784
		-----	-----
<u>TOTAL LIABILITIES</u>		179,460	166,392
		-----	-----
<u>NET ASSETS</u>		388,541	684,505
		=====	=====
EQUITY			
Retained Earnings		388,541	684,505
		-----	-----
<u>TOTAL EQUITY</u>		388,541	684,505
		=====	=====

The accompanying notes form part of the financial statements.

PROFESSIONAL TEACHERS' COUNCIL, NSW**ACN - 002 220 957****STATEMENT OF CASH FLOWS****FOR THE YEAR ENDED 30 JUNE, 2015**

	<u>Note</u>	<u>2015</u> \$	<u>2014</u> \$
<u>CASH FLOW FROM OPERATING ACTIVITIES</u>			
Receipts from customers		380,496	480,487
Receipts of grants		308,178	313,078
Payments to suppliers and employees		(955,742)	(829,755)
Interest Received		1,018	1,838
Net cash generated from/(used in) operating activities	9	<u>(266,050)</u>	<u>(34,352)</u>
<u>CASH FLOW FROM INVESTING ACTIVITIES</u>			
Payment for plant & equipment		-	-
Net cash provided by/(used in) investing activities		<u>-</u>	<u>-</u>
Net increase/(decrease) in cash held		(266,050)	(34,352)
Cash at beginning of year		752,399	786,751
CASH AT END OF YEAR	4	<u>486,349</u> =====	<u>752,399</u> =====

The accompanying notes form part of the financial statements.

PROFESSIONAL TEACHERS' COUNCIL, NSW**ACN - 002 220 957****STATEMENT OF CHANGES IN EQUITY****FOR THE YEAR ENDED 30 JUNE, 2015**

	<u>Retained</u> <u>Earnings</u> \$	<u>Total</u> \$
Balance at 30 June 2013	651,854	651,854
	-----	-----
Comprehensive income		
Surplus for the year	32,651	32,651
Other comprehensive income	-	-
	-----	-----
Total comprehensive income	32,651	32,651
	-----	-----
Balance at 30 June 2014	684,505	684,506
	-----	-----
Comprehensive income		
Deficiency for the year	(295,964)	(295,964)
Other comprehensive income	-	-
	-----	-----
Total comprehensive income	(295,964)	(295,964)
	-----	-----
Balance at 30 June 2015	388,541	388,541
	=====	=====

The accompanying notes form part of the financial statements.

PROFESSIONAL TEACHERS' COUNCIL, NSW

ACN - 002 220 957

NOTES TO THE FINANCIAL STATEMENTS

FOR THE YEAR ENDED 30 JUNE, 2015

1. SUMMARY OF SIGNIFICANT ACCOUNTING POLICIES

The directors have prepared the financial statements on the basis that the company is a non-reporting entity because there are no users who are dependent on its general purpose financial statements. These financial statements are therefore special purpose financial statements that have been prepared in order to meet the requirements of the Corporations Act 2001.

The financial statements have been prepared in accordance with the mandatory Australian Accounting Standards applicable to entities reporting under the Corporations Act 2001 and the significant accounting policies disclosed below which the directors have determined are appropriate to meet the needs of members. Such accounting policies are consistent with those of previous periods unless stated otherwise.

The financial statements have been prepared on an accruals basis and are based on historical costs unless otherwise stated in the notes. The accounting policies that have been adopted in the preparation of the statements are as follows.

Accounting Policies

a) Revenue

Grant revenue is recognised in the statement of comprehensive income when the entity obtains control of the grant and it is probable that the economic benefits gained from the grant will flow to the entity and the amount of the grant can be measured reliably.

If conditions are attached to the grant which must be satisfied before it is eligible to receive the contribution, the recognition of the grant as revenue will be deferred until those conditions are satisfied.

When grant revenue is received whereby the entity incurs an obligation to deliver economic value directly back to the contributor, this is considered a reciprocal transaction and the grant revenue is recognised in the statement of financial position as a liability until the service has been delivered to the contributor, otherwise the grant is recognised as income on receipt.

PROFESSIONAL TEACHERS' COUNCIL, NSW

ACN - 002 220 957

NOTES TO THE FINANCIAL STATEMENTS

FOR THE YEAR ENDED 30 JUNE, 2015

1. SUMMARY OF SIGNIFICANT ACCOUNTING POLICIES

a) Revenue (continued)

Interest is recognised as revenue when received.

Revenue from the rendering of a service is recognised upon the delivery of the service to the customers.

All revenue is stated net of the amount of goods and services tax (GST).

b) Depreciation

Property, plant and equipment are depreciated over their estimated useful lives using the prime cost method.

c) Employee Entitlements

The amount expected to be paid to employees for their pro-rata entitlements to annual leave is accrued annually at current wage rates.

d) Income Tax

The directors of the company have determined that the company is exempt from income tax.

e) Comparative Figures

Where necessary comparative figures have been adjusted to conform with changes in presentation in the current financial year.

f) Economic Dependence

Professional Teachers' Council, NSW is dependent on a grant from the NSW Government's Department of Education.

PROFESSIONAL TEACHERS' COUNCIL, NSW**ACN - 002 220 957****NOTES TO THE FINANCIAL STATEMENTS****FOR THE YEAR ENDED 30 JUNE, 2015**

	<u>2015</u> \$	<u>2014</u> \$
2. OPERATING REVENUE		
Membership Fees	128,581	127,779
Secretariat Services	220,026	275,244
Study Tours	128,673	-
Interest Received	1,018	1,838
Other Income	53,233	47,152
Grants Received	308,178	313,078
Global Ed. Proj. (Deficiency)/Surplus	(160,893)	30,759
	-----	-----
	678,816	795,850
	=====	=====
3. NET SURPLUS		
Expenses		
Depreciation and Amortisation:		
- office equipment	5,190	6,605
- leasehold improvement	375	375
	-----	-----
Total Depreciation and Amortisation	5,565	6,980
	=====	=====
Employee Benefits	(22,920)	3,555
	=====	=====
Remuneration of Auditor:		
- audit	3,000	3,000
- other services	4,300	5,600
	-----	-----
Total Remuneration of Auditor	7,300	8,600
	=====	=====

PROFESSIONAL TEACHERS' COUNCIL, NSW**ACN - 002 220 957****NOTES TO THE FINANCIAL STATEMENTS****FOR THE YEAR ENDED 30 JUNE, 2015**

	<u>2015</u> \$	<u>2014</u> \$
4. CASH AND CASH EQUIVALENTS		
Cash on Hand	107	107
Cash at Bank	486,242	752,292
	-----	-----
	486,349	752,399
	=====	=====
5. TRADE AND OTHER RECEIVABLES		
Trade Debtors	73,856	62,369
Less: Provision for Doubtful Debts	(12,000)	(5,000)
	-----	-----
	61,856	57,369
Bonds Paid	200	200
Mastercard	-	163
GST Receivable	2,853	-
Other Receivables	-	18,053
	-----	-----
	64,909	75,785
	=====	=====
6. PLANT & EQUIPMENT		
Office Equipment & Furniture At Cost	84,509	101,506
Less: Accumulated Depreciation	(72,587)	(83,989)
	-----	-----
	11,922	17,517
	-----	-----
Building Improvements At Cost	7,494	7,494
Less: Accumulated Amortisation	(2,673)	(2,298)
	-----	-----
	4,821	5,196
	-----	-----
	16,743	22,713
	=====	=====

PROFESSIONAL TEACHERS' COUNCIL, NSW**ACN - 002 220 957****NOTES TO THE FINANCIAL STATEMENTS****FOR THE YEAR ENDED 30 JUNE, 2015**

	<u>2015</u> \$	<u>2014</u> \$
7. TRADE AND OTHER PAYABLES		
Trade Creditors	15,490	19,754
Mastercard	1,560	-
Income Received in Advance	-	26,176
Global Education Project	-	26,245
Unexpended Government Grant	100,159	-
GST Payable	-	3,429
PAYG Withheld Payable	6,516	6,006
Superannuation Payable	-	7,602
Other Payables	9,638	8,163
	----- 133,363 =====	----- 97,375 =====
8. PROVISIONS		
Current		
Employee Entitlements	12,028 =====	54,233 =====
Non-Current		
Employee Entitlements	34,069 =====	14,784 =====

PROFESSIONAL TEACHERS' COUNCIL, NSW**ACN - 002 220 957****NOTES TO THE FINANCIAL STATEMENTS****FOR THE YEAR ENDED 30 JUNE, 2015**

	<u>2015</u> \$	<u>2014</u> \$
9. CASH FLOW INFORMATION		
Reconciliation of cash flows from operations with surplus from ordinary activities after income tax:		
Surplus from ordinary activities after income tax	(295,964)	32,651
Non-cash flows in profit from ordinary activities:		
Depreciation	5,970	7,222
Changes in assets and liabilities:		
(Increase)/decrease in receivables	10,876	447
Increase/(decrease) in payables	35,988	(78,277)
Increase/(decrease) in provision	(22,920)	3,605
CASH FLOWS FROM OPERATIONS	----- (266,050) =====	----- (34,352) =====

PROFESSIONAL TEACHERS' COUNCIL, NSW

ACN - 002 220 957

NOTES TO THE FINANCIAL STATEMENTS

FOR THE YEAR ENDED 30 JUNE, 2015

10. ENTITY LIMITED BY GUARANTEE

The Professional Teachers' Council, NSW is incorporated as a company limited by guarantee. No share capital is defined in the Memorandum & Articles. All members of the company are limited to a guarantee of \$100 per member in the event of a deficiency in a winding up.

11. ENTITY DETAILS

The registered office of the company is:

Professional Teachers' Council, NSW
56 Bland Street
ASHFIELD NSW 2131

The principal place of business is:

Professional Teachers' Council, NSW
56 Bland Street
ASHFIELD NSW 2131

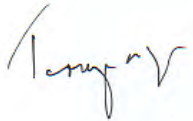
PROFESSIONAL TEACHERS' COUNCIL, NSW

ACN - 002 220 957

AUDITOR'S INDEPENDENCE DECLARATION
UNDER SECTION 307C OF THE CORPORATIONS ACT 2001
TO THE MEMBERS OF THE PROFESSIONAL TEACHERS' COUNCIL, NSW

I declare that, to the best of my knowledge and belief, during the year ended 30 June 2015 there have been:

- i. no contraventions of the auditor independence requirement as set out in the Corporations Act 2001 in relation to the audit; and
- ii. no contraventions of any applicable code of professional conduct in relation to the audit.



TERRENCE E. GIBBS
Company Auditor

Date: 6 October, 2015

5th Floor
20-24 Wentworth Street
PARRAMATTA NSW 2150

**INDEPENDENT AUDITOR'S REPORT
TO THE MEMBERS OF THE
PROFESSIONAL TEACHERS' COUNCIL, NSW**

I have audited the accompanying financial report, being a special purpose financial report, of Professional Teachers' Council, NSW, which comprises the Statement of Financial Position as at 30 June 2015, the Statement of Comprehensive Income, Statement of Changes in Equity and Statement of Cash Flows for the year then ended, Notes comprising a Summary of Significant Accounting Policies and other explanatory information, and the Directors' Declaration.

Directors' Responsibility for the Financial Report

The directors of the company are responsible for the preparation of the financial report and have determined that the accounting policies described in Note 1 to the financial report are appropriate to meet the requirements of the Corporations Act 2001 and are appropriate to meet the needs of the members. The directors' responsibility also includes such internal control as the directors determine is necessary to enable the preparation of a financial report that is free from material misstatement, whether due to fraud or error.

Auditor's Responsibility

My responsibility is to express an opinion on the financial report based on my audit. I have conducted my audit in accordance with Australian Auditing Standards. Those standards require that I comply with relevant ethical requirements relating to audit engagements and plan and perform the audit to obtain reasonable assurance whether the financial report is free from material misstatement.

An audit involves performing procedures to obtain audit evidence about the amounts and disclosures in the financial report. The procedures selected depend on the auditor's judgement, including the assessment of the risks of material misstatement of the financial report, whether due to fraud or error. In making those risk assessments, the auditor considers internal control relevant to the entity's preparation of the financial report that gives a true and fair view in order to design audit procedures that are appropriate in the circumstances, but not for the purpose of expressing an opinion on the effectiveness of the entity's internal control. An audit also includes evaluating the appropriateness of accounting policies used and the reasonableness of accounting estimates made by the directors, as well as evaluating the overall presentation of the financial report.

I believe that the audit evidence I have obtained is sufficient and appropriate to provide a basis for my audit opinion.

- 2 -

Independence

In conducting my audit, I have complied with the independence requirements of the Corporations Act 2001.

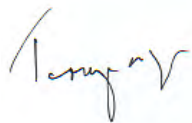
Opinion

In my opinion, the financial report of Professional Teachers' Council, NSW is in accordance with the Corporations Act 2001, including:

- (a) giving a true and fair view of the Professional Teachers' Council, NSW's financial position as at 30 June 2015 and of its performance for the year ended on that date; and
- (b) complying with Australian Accounting Standards to the extent described in Note 1 and the Corporations Regulations 2001.

Basis of Accounting

Without modifying my opinion, I draw attention to Note 1 to the financial report, which describes the basis of accounting. The financial report has been prepared for the purpose of fulfilling the directors' financial reporting responsibilities under the Corporations Act 2001. As a result, the financial report may not be suitable for another purpose.



TERRENCE E. GIBBS
Company Auditor

Date: 6 October, 2015

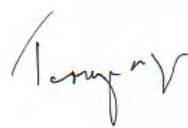
5th Floor
20-24 Wentworth Street
PARRAMATTA NSW 2150

PROFESSIONAL TEACHERS' COUNCIL, NSW

ACN - 002 220 957

ACCOUNTANTS REPORT TO THE MEMBERS

We have prepared the accompanying Income & Expenditure Statements for the year ended 30 June 2015 from the books and records of the Association and other information provided by the employees of the Association exclusively for the use and benefit of the Association its Directors & Members. Under the terms of our engagement we have not audited the Income & Expenditure Statements.



Terrence E. Gibbs

T.E. GIBBS & CO PTY. LIMITED
Public Accountants & Company Auditors

Date: 6 October, 2015

5th Floor
20-24 Wentworth Street
PARRAMATTA NSW 2150

PROFESSIONAL TEACHERS' COUNCIL, NSW**ACN - 002 220 957****INCOME & EXPENDITURE STATEMENT****FOR THE YEAR ENDED 30 JUNE, 2015**

	<u>2015</u>	<u>2014</u>
	\$	\$
INCOME		
Membership Fees	128,581	127,779
Secretariat	220,026	275,244
Rental Income	44,980	44,980
Hire of Board Room	-	384
Presidents Dinner	2,500	1,073
Workshops	4,443	-
Study Tour – China	34,338	-
Study Tour – India	14,716	-
Study Tour – Japan	55,180	-
Conference – Pacific Circle	24,439	-
Grant Received	-	4,900
Miscellaneous Income	1,310	715
Interest Received	1,018	1,838
Grant - Org – Admin	36,916	36,916
Grant - Org – Ministerial	12,851	12,851
Grant - Org – Printing	35,476	47,176
Grant - Org – SMS/Postage	35,475	47,175
Grant - Org – Telephone	6,379	6,379
Grant - Org – Grant Jnt Mail	35,493	35,493
Grant - Assoc – Printing	72,794	61,094
Grant - Assoc – SMS/Postage	72,794	61,094
	-----	-----
	839,709	765,091
	-----	-----

PROFESSIONAL TEACHERS' COUNCIL, NSW**ACN - 002 220 957****INCOME & EXPENDITURE STATEMENT****FOR THE YEAR ENDED 30 JUNE, 2015**

	<u>2015</u>	<u>2014</u>
	\$	\$
EXPENSES		
Audit/Accounting Fees	7,300	8,600
Bad Debts	-	-
Bank Fees	3,075	1,084
Capitation	1,477	2,955
Depreciation	5,565	6,980
Doubtful Debts	7,000	(2,500)
Filing Fees	79	265
Subscription	4,501	4,130
Internet/Email	990	1,608
Telephone/Fax	6,917	5,807
Teleconference	-	64
Computer Support	52,973	28,816
Equipment Leasing	14,439	4,932
Equipment R & M	123	350
Accrued Annual Leave	30,992	24,828
Accrued Long Service Leave	19,285	2,248
Contractor	1,248	-
Staff Amenities	2,396	4,423
Staff Training	414	2,175
Superannuation	39,179	34,877
Wages & Salaries	353,444	358,749
Workers Compensation	2,027	2,209
Recruitment Fees	5,060	-
Cleaning	9,707	8,363
Consultancy	3,700	3,989
Courier	1,611	1,411
Electricity	4,038	3,596
Insurance	6,274	7,384
Legal Fees	5,009	460
Office Supplies	4,481	1,023
Office Rent	57,265	53,779

PROFESSIONAL TEACHERS' COUNCIL, NSW**ACN - 002 220 957****INCOME & EXPENDITURE STATEMENT****FOR THE YEAR ENDED 30 JUNE, 2015**

	<u>Note</u>	<u>2015</u>	<u>2014</u>
		\$	\$
Photography		600	550
Postage		22,616	16,121
Printing		13,594	26,788
Removalist		-	10,331
Repairs & Maintenance		377	167
Stationery		3,875	3,509
Water Usage		597	128
PTC Events – Travel		5,324	1,441
PTC Events – Accommodation		298	195
PTC Events – Venue Hire		404	200
PTC Events – Equipment Hire		-	177
PTC Events – Catering Costs		10,083	7,273
PTC Events – Presenters		1,200	-
PTC Events – Awards		1,211	1,527
Study Tour – China		35,187	-
Study Tour – India		13,716	-
Study Tour – Japan		54,713	-
Conference – Pacific Circle		14,828	-
Grant - Assoc – Printing		134,736	103,682
Grant - Assoc – SMS/Postage		10,852	18,505
		-----	-----
		974,780	763,199
		-----	-----
(Deficiency)/Surplus from operating activities		(135,071)	1,892
(Deficiency)/Surplus from special project	1	(160,893)	30,759
		-----	-----
<u>NET (DEFICIENCY)/SURPLUS FOR THE YEAR</u>		(295,964)	32,651
		=====	=====

PROFESSIONAL TEACHERS' COUNCIL, NSW**ACN - 002 220 957****ABBREVIATED INCOME & EXPENDITURE STATEMENT****FOR THE YEAR ENDED 30 JUNE, 2015**

	<u>2015</u>	<u>2014</u>
	\$	\$
INCOME		
Membership Fees	128,581	127,779
Secretariat	220,026	275,244
Rental Income	44,980	44,980
Hire of Board Room	-	384
Conference – Pacific Circle	24,439	-
Study Tours	104,234	-
Interest Received	1,018	1,838
Other Income	8,253	1,788
Grants Received	308,178	313,078
	-----	-----
	839,709	765,091
	-----	-----
EXPENSES		
Accountancy	4,300	5,600
Audit Fees	3,000	3,000
Bad Debts	-	-
Bank Fees and Charges	3,075	1,084
Capitation	1,477	2,955
Computer Support	52,973	28,816
Conference – Pacific Circle	14,828	-
Consultancy	3,700	3,989
Couriers	1,611	1,411
Depreciation	5,565	6,980
Doubtful Debts	7,000	(2,500)
Filing Fees	79	265
Insurance	6,274	7,384
Journals & Subscriptions	4,501	4,130
Legal fees	5,009	460
Light & Power	4,038	3,596
Long Service Leave	19,285	2,248

PROFESSIONAL TEACHERS' COUNCIL, NSW**ACN - 002 220 957****ABBREVIATED INCOME & EXPENDITURE STATEMENT****FOR THE YEAR ENDED 30 JUNE, 2015**

	<u>Note</u>	<u>2015</u> \$	<u>2014</u> \$
Maintenance & Cleaning of Grounds & Building		10,084	8,530
Office Supplies & Expenses		8,956	5,082
Postage		22,616	16,121
Professional Development/PTC Events		18,520	10,813
Recruitment Fees		5,060	-
Removalist		-	10,331
Rent & Outgoings		57,862	53,907
Repairs & Maintenance of Equipment		14,562	5,282
Salaries - Ordinary		385,684	383,577
Secretariat Expenses		13,594	26,788
Staff Amenities		2,396	4,423
Staff Training		414	2,175
Study Tours		103,616	-
Superannuation		39,179	34,877
Telephone		7,907	7,479
Workers Compensation		2,027	2,209
Grant Expenses		145,588	122,187
		-----	-----
		974,780	763,199
		-----	-----
(Deficiency)/Surplus from operating activities		(135,071)	1,892
(Deficiency)/Surplus from special project	1	(160,893)	30,759
		-----	-----
<u>NET (DEFICIENCY)/SURPLUS FOR THE YEAR</u>		(295,964)	32,651
		=====	=====

PROFESSIONAL TEACHERS' COUNCIL, NSW**ACN - 002 220 957****INCOME & EXPENDITURE STATEMENT****FOR THE YEAR ENDED 30 JUNE, 2015****NOTE 1: SURPLUS FROM SPECIAL PROJECT**

The Global Education Project is funded by DFAT – Australian Aid Program (formerly AusAID), and the current project is due to be completed in December 2015.

	<u>2015</u>	<u>2014</u>
	\$	\$
INCOME		
Grants Received from AusAID/DFAT	106,245	438,450
Other Grants Received	-	36,000
Interest Received	4,549	9,246
	-----	-----
	110,794	483,696
	-----	-----
EXPENSES		
Audit	500	500
Bank Fees	56	-
Bookkeeping	4,330	6,494
Catering	111	165
Conference	273	2,610
Consultants	69,094	90,921
Courier	-	87
Depreciation	405	242
Graphic Design	7,314	9,764
Grant Expenses	106,963	218,988
Postage	10,680	660
Printing and Stationery	2,962	4,270
Rent	5,720	5,720
Secretariat	59,079	102,682
Staff Amenities	17	359
Telephone	-	1,090
Travel Expenses	4,183	6,782
Website	-	1,603
	-----	-----
	271,687	452,937
	-----	-----
<u>(DEFICIENCY)/SURPLUS</u>		
<u>FROM SPECIAL PROJECT</u>	(160,893)	30,759
	=====	=====

TREASURER'S REPORT



For the Year Ended 30 June 2015

Page 43 image –
2010 HSC Major Work by M Driver

Our thanks to the Board of Studies Teaching and Educational Standards (BOSTES) for the use of this ArtExpress image

TREASURER'S REPORT FOR THE YEAR ENDED 30 JUNE 2015

SUMMARY

For the year ending 30 June 2015 the Professional Teachers Council NSW (PTC NSW) recorded a net loss from ordinary activities (including the Global Education project) of \$295,964 compared to a surplus of \$32,651 for the previous year.

For the year ending 30 June 2015, the Global Education Project deficiency of \$160,863 is covered by the project's surpluses in previous years that had been retained by PTC NSW and earmarked for Global Education Project activities.

	2009–2010	2010–2011	2011–2012	2012–2013	2013–2014
PTC surplus (deficiency) from operating activities	\$15,503	(\$13,538)	\$3,185	\$51,475	\$1,892
GEP surplus	\$159,698	\$15,982	\$49,806	\$66,080	\$30,759
PTC net surplus (deficiency)	\$175,201	\$2,444	\$52,991	\$117,555	\$32,759

The decline in the overall financial situation for PTC NSW reflects the winding up of the Global Education Project and a (partly related) drop in income from Secretariat services. Commercial rental rate for office accommodation is also a continuing drain on finances. Income from capitations is slightly up on the previous year but still down on the 2012/13 figure.

The net assets of PTC NSW as at 30 June 2015 were \$388,541 comprising Cash at Bank \$486,242.

NOTES

Treasurer and Finance Committee

Following an election at the 2014 Annual General Meeting, Judith Pilch took on the role of Treasurer until her resignation from the Board at the end of February. At the PTC NSW Board Meeting on 9 March 2015, it was resolved to co-opt Linda Pritchard to the Board as Treasurer. She took on this role until stepping down from the Board immediately prior to the Board meeting on 27 April 2015 at which Ann Thomas agreed to take on the role of Interim Treasurer from May to the Annual General Meeting in October 2015.

Since the last AGM, the Finance Committee has met regularly to undertake a number of tasks including: monitoring PTC finances and preparing related reports to PTC Executive and Board; revising secretariat schedule of fees; recommending a reduction in postage and printing expenditure through

greater use of electronic means of communication; and preparing a budget for 2015/16 financial year. The committee's work was greatly assisted by an internal audit led by the Executive Officer, David Browne of time spent by staff on a range of secretariat tasks.

Decline in Revenue

Since taking over the management of the Global Education Project in 2010, PTC NSW has received funds from the Global Education Project to cover the costs to PTC in running the project. These costs relate to rent for office space, PTC NSW Secretariat fees, salary for the project manager, administrative staff time involved and other expenses such as internal printing.

In 2014, the Global Education Project was managed by the PTC NSW Executive Officer, Kim Tsolakis as part of his overall duties up until his resignation from PTC NSW. With the appointment of a new Executive Officer in 2015, the oversight of the Global Education Project was removed from the duties of the Executive Officer (David Browne) and Kim Tsolakis was contracted for 1.5 days per week to finalise the project. This resulted in an increase to staff numbers.

As seen in the table below, the income to PTC NSW from accommodation and secretariat fees for services provided by PTC NSW to the Global Education Project is considerably less than the previous two years.

Income from Global Education Project	2011–2012	2012–2013	2013–2014	2014–2015
Secretariat fees	\$62,031	\$119,661	\$102,682	\$59,079
Rent	-	\$1,980	\$5,720	\$5,720
Total	\$62,031	\$121,641	\$108,402	\$64,799

There has been a decline over the last four years in the overall income generated by secretariat services that is Secretariat income minus secretariat expenses (but not including staff costs).

	2011–2012	2012–2013	2013–2014	2014–2015
Income from secretariat services	\$270,733	\$310,146	\$248,456	\$206,432

Income from capitations is slightly up on the previous year but still down on the 2012/13 figure.

	2011–2012	2012–2013	2013–2014	2014–2015
Capitations	\$132,232	\$134,632	\$127,779	\$128,581

In the past PTC NSW has rented excess office space to some member associations (as well as the Global Education Project) and this has provided a steady income stream for PTC NSW up until January 2013 when PTC NSW administrative offices moved from school premises at Leichhardt into commercial rented premises at Ashfield.

	2011–2012	2012–2013	2013–2014	2014–2015
Rental income	\$40,209	\$36,306	\$44,980	\$44,980
Commercial rental expenses	N/A	\$18,822	\$53,907	\$57,862
Difference (Income – Expenses)	\$40,209	\$17,484	- \$8,927	-\$12,882

Recommendations

Before moving the following recommendations I wish to acknowledge the commitment and hard work of the Finance Committee members especially Judith Pilch while Treasurer, John Meng (Board member), Mai Mai Lin (Accounts Officer, PTC NSW) and David Browne (Executive Officer, PTC NSW).

I move that:

1. the accounts for 1 July 2014 – 30 June 2015 Financial Year be accepted
2. Terry Gibbs & Co Pty Ltd be nominated as Auditor 1 July 2015 – 30 June 2016 Financial Year



Ann Thomas
Interim Treasurer
Professional Teachers Council NSW
6 October 2015

Page 49 image –
2014 HSC Major Work by A Williams

Our thanks to the Board of Studies Teaching and Educational Standards (BOSTES) for the use of this ArtExpress image

EXTERNAL COMMITTEE AND PTC NSW SUBCOMMITTEE REPORTS



For the Year Ended 30 June 2015

QUALITY TEACHING COUNCIL (QTC) AND PROFESSIONAL LEARNING ENDORSEMENT ADVISORY COMMITTEE (PLEAC)

AGM REPORT 2015

The Quality Teaching Council (QTC) provides advice to the Board of Studies Teaching and Educational Standards (BoSTES) with advice about the Professional Teaching Standards, maintenance and achievement of the Standards, initial teacher educational programs and the endorsement of providers of registered professional learning for teachers across NSW.

There are three sub-committees that provide advice to the QTC: the Professional Learning Endorsement and Advisory Committee (PLEAC), the Initial Teacher Education Committee (ITEC) and the Moderating and Consistency Committee (MCC). The PLEAC provides advice to the QTC regarding the endorsement of providers of registered professional learning.

The Professional Teachers' Council NSW has a Ministerial appointed seat on the Quality Teaching Council and has an elected position on the Professional Learning Endorsement and Advisory Committee (PLEAC). Both these three year positions are presently held by Nerina Pretlove, Vice President of PTC NSW.

There has been quality discussions about the directions of quality professional learning in NSW throughout the year. Of particular interest has been the preparation for the accreditation of all teaching staff across NSW to the proficient level in 2018 and the movement of those working in the early childhood sector to the Standards in 2016.

Over the past twelve months, it was evident that there was a rising awareness of the professional learning space by commercial companies, individual suppliers and schools. The workload of the PLEAC, in particular, has significantly increased with the rising interest of commercial suppliers in providing professional learning. The higher levels of standards are not well represented across all the standards but nor are there many teachers accredited at those levels.

It is the election year for the QTC. The ballot is supervised by the Australian Electoral Commission. The 11 elected Council members are accredited teachers practising in NSW. Teachers are elected from all types of schools across the state, including government and non-government, rural and urban schools. In 2015, for the first time, NSW early childhood teachers will have a representative on the Council. Please take the time and vote.

As we near the end of this QTC, I would like to thank the Minister of Education, Mr Adrian Piccoli, for his support of PTC NSW and our ministerial seat on the Council. We bring a particular perspective in that we are cross sector and K-12 with a great investment into professional learning for teachers across NSW.

Nerina Pretlove

Member of Quality Teachers Council

Member of the Professional Learning Endorsement Advisory Committee

PROFESSIONAL LEARNING COMMITTEE

AGM REPORT 2015

This year the committee consisted of Susan Gazis, Nerina Pretlove, Jim Sturgiss, and more recently Kim Tsolakis, along with PTC NSW representation from David Browne and Bernadette Motulalo, ably standing in for Shreela Pradhan. It has been a pleasure to work with such committed team members. The committee devotes time to reading and formulating their individual recommendations to submitted applications for endorsement and then the meeting consists of deliberations on how best to advise the Associations on those submissions. This year, the committee has advised on 134 applications for Proficient, two for Accomplished and three for Lead. The range of activities that Associations offer to their members is a great demonstration of Quality Teaching. The committee encourages Associations to take up the challenge to submit applications for the Accomplished and Lead categories.

Anne Power

Outgoing Chair of the Professional Learning Committee



AUSTRALIAN PROFESSIONAL TEACHERS ASSOCIATION

AGM REPORT 2015

APTA is the national body of state and territory joint councils. The Professional Teachers Council NSW is one of the eight members of APTA. Across the country, all joint state and territory joint councils have reported that they have faced a range of challenges. To this end, the Board formed a working group to develop opportunities supporting APTA, the state and territory joint councils and joint councils member associations.

The APTA Strategic Plan states that the mission of APTA is to provide leadership that supports and advances professional teaching associations.

The mission is supported by five (5) goals, which are summarised as:

1. Be a voice and raise the profile
2. Build an informed and supportive network for collaborative activities
3. Be proactive in the policy area
4. Advocate on matters of significance
5. Manage and resource the association.

The terms of reference for the working party are squarely targeted at Goal 5 (with potential benefits for Goal 2).

Nationally, the Australian Government has been changed. Governance arrangements of a number of national government bodies stemming from the Australian Government's preference for small expert boards, rather than representative boards. In keeping with the Government's approach, new boards have been appointed with new ways of operating and new agendas. APTA is currently considering how it relates to these groups.

APTA is invited to consultations organised through the Department of Education (Federal) (Roundtables) and AITSL. The past Minister and his advisers were open to discussions with APTA. To this end, it is important to maintain our relationship with AITSL and to meet with the new Minister.

The following has happened:

1. Reform of the Federation – White Paper

The Commonwealth is producing a White Paper on the Reform of the Federation. The purpose of the White Paper is to clarify the responsibilities between the Commonwealth, States and Territories, so that states are sovereign in their own sphere. APTA was represented at a roundtable session in Sydney (25 February 2015). The focus was Early Childhood and Schools. The Governments' summary of each of the roundtable discussions can be found at <https://federation.dpmc.gov.au/stakeholder-roundtables>.

2. TEMAG Report

The Teacher Education Ministerial Advisory Group (TEMAG) Report and the Australian Government's response to the report were released on 13 February 2015. APTA representatives attended the launch. Significant changes to the Initial Teacher Education area have been proposed with most work in this agenda falling to AITSL. APTA has representation on AITSL's Teacher Quality Advisory Committee. Information about TEMAG actions and status can be found at <http://www.studentsfirst.gov.au/teacher-education-ministerial-advisory-group>

3. Australian Institute of Teaching and School Leadership (AITSL)

Media alerts and AITSL newsletters have informed APTA that new board members have been appointed to the AITSL Board on 2 June 2015. Board members were appointed as experts rather than as representatives of organisations. The AITSL Board comprises John Hattie, Chair, John Fleming, Deputy Chair, Tania Aspland, Michele Bruniges, Jennifer Buckingham, Tony Cook, Stephen Elder, Trevor Fletcher, Geoff Newcombe, Rob Nairn and Melanie Saba

This AITSL Board met for the first time on 23 June 2015. The Minister met with the Board to discuss the AITSL work program in initial teacher education. AITSL's letter of intent can be found at <http://www.aitsl.edu.au/docs/default-source/board-of-directors-resources/aitsl-statement-of-intent-july-2015.pdf?sfvrsn=2>. The AITSL board met for the second time on Friday 31 July 2015.

AITSL has launched its professional growth and leadership material. In March APTA representatives were invited to an AITSL workshop where the material produced by the Innovation Unit was examined and tested before it was launched by AITSL.

The APTA Board sees that it is critical for APTA to continue to engage with AITSL about AITSL's new agenda.

4. Australian Curriculum, Assessment and Reporting Authority (ACARA)

APTA has had little engagement with ACARA. This year has marked the commencement of a new ACARA board. Minister Pyne appointed the new Chair of ACARA, Emeritus Professor Steven Schwartz AM, on 16 June 2015. The Minister also appointed a new Deputy-Chair, Professor Emeritus Brian Caldwell, PhD. Four new board members were also appointed to ACARA. They are Dr David Howes (VCAA), Ms Jayne Johnston SA DECD, Mr Paul Hewitt NSW BOSTES and Dr Tim McDonald WA Catholic Education.

ACARA is currently working on "uncrowding" and "rebalancing" the curriculum. It is expected that the amended curriculum will be published in December 2015. It is anticipated that once this work is completed, the curriculum work of ACARA will be significantly reduced.

5. Asia Education Foundation (AEF)

AEF is currently revising its strategic plan as a result of the 2015 budget. It has developed many resources, developed by teaching associations, which are of value to teachers. APTA is represented on the AEF board.

6. APTA Awards

These awards are hugely successful across the country. The awards were held on 22 November 2014 at Graduate House, Melbourne.

APTA presented five sets of awards to individuals and organisations that have led, supported and advanced professional teaching associations and enhanced the status of teaching as a profession.

Dorothy Hoddinott Medal for Outstanding Lifetime Achievement

Paula Christophersen – CPTAV – Digital Learning and Teaching Victoria

Early Career Teacher Award

Ellen Morrow – PTC WA – Home Economics Institute of Australia Western Australia division

APTA Meritorious Contribution to the Profession Award

Helen Best – JCQTA – Modern Language Teachers Association Queensland

Karen Clark – Network of Education Associations of Tasmania

Anna Davis – PTC NSW – Science Teachers Association NSW

Lorraine Hodgson – Professional Teachers Association Northern Territory

Tarsha Howard – CEASA – Lead Teachers Association of South Australia

Helen Little – JCQTA – Learning Support Teachers' Association of Queensland

Kirsten Ohlhaber – CEASA – South Australian German Teachers Association

Phil Page – NEAT – Tasmanian Association for the Teaching of English

Karen Yager – PTC NSW – English Teachers Association NSW

Innovative Association Award

Canberra Mathematical Association

Digital Teaching and Learning Victoria

Geography Teachers' Association Victoria

Mathematical Association of Victoria

Susan Gazis and Nerina Pretlove

PROFESSIONAL TEACHERS' COUNCIL NSW

GLOBAL PERSPECTIVES PROJECT

AGM REPORT 2015

The Professional Teachers' Council NSW (PTC NSW) Global Perspectives Project continued the work of the Global Education Project since the Federal Government cut funding effective 31 December 2014. The purpose of the PTC NSW project was to continue the implementation of a global perspective at all stages of schooling to:

- prepare globally competent individuals for the 21st century
- encourage awareness, curiosity and interest in learning about the world and how it works
- develop active, participating citizens who contribute to shaping a better future

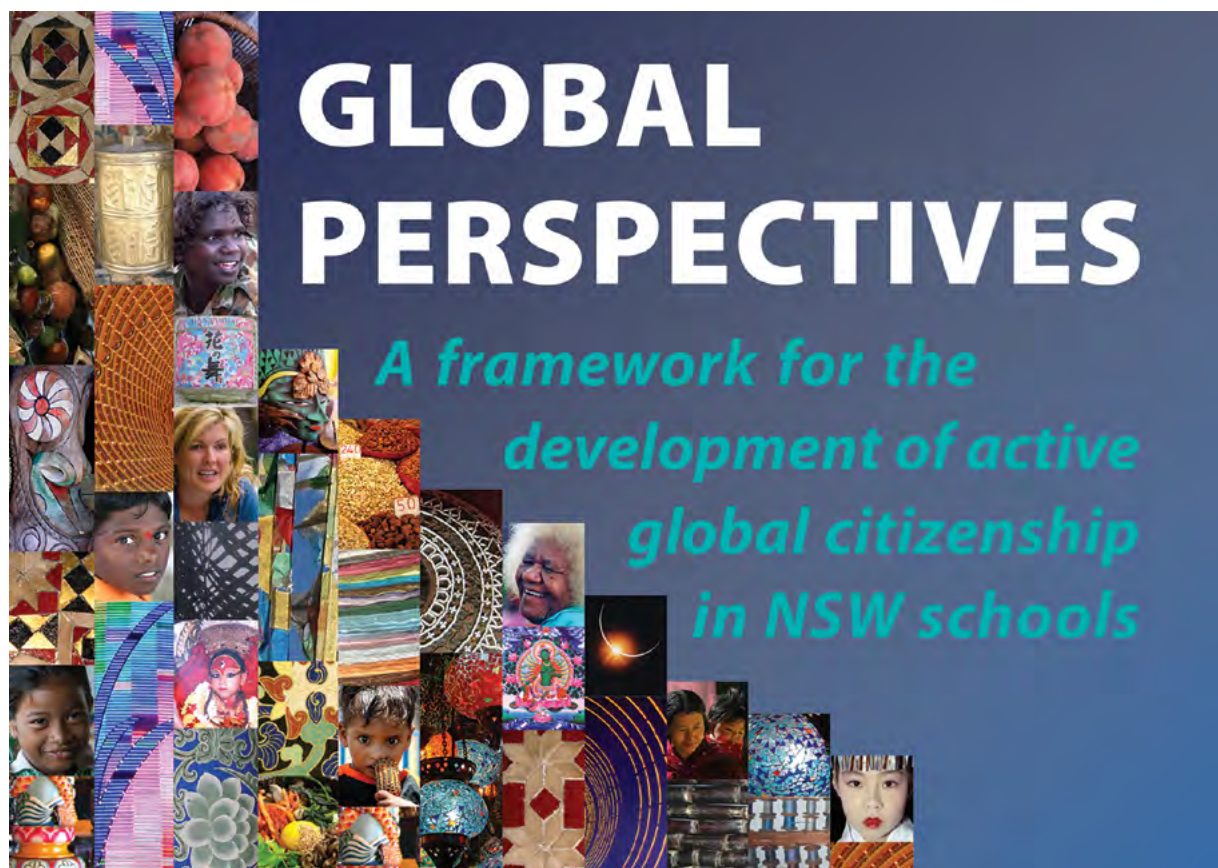
The target audience for the NSW Project was, and continues to be, the primary and secondary school students across NSW. The strategy to reach these students was to inform and provide resources and knowledge and skills training in global education and development issues to teachers and pre-service teachers across all universities in NSW.

Embedding a global perspective in the curriculum contributes explicitly to current priorities in Australian education and the achievement of 21st century educational goals identified in the Melbourne Declaration on Educational Goals for Young Australians, December 2008 (Curriculum Corporation, 2008, p. 7, 9) which insists that 'Australian schooling promotes equity and excellence and that all young Australians become:

- successful learners
- confident and creative individuals
- active and informed citizens

...and in doing so, are:

- able to relate to and communicate across cultures, especially the cultures and countries of Asia
- work for the common good, in particular sustaining and improving natural and social environments
- responsible global and local citizens'



The NSW project has produced a range of excellent resources including: *Global Perspectives: a framework for the development of global citizenship in NSW schools* which provides the overall rationale for the program and underpinned the project's educational work. It also has a website www.ptc.nsw.edu.au/gepnsw/gepnsw-home to provide all schools, teachers, students, universities, and the broader community with access to the work of the PTC NSW Global Perspective Project.

While PTC NSW has been able to support universities, schools and member associations throughout 2015, the cuts to the funding of the project by the current Federal Government will result in the project closing in December 2015.

I would like to take this opportunity to thank all those involved in this project for their dedication and support of this important initiative over the past 15 years.

Kim Tsolakis
Director
PTC NSW Global Perspective Project.

PROFESSIONAL TEACHERS' COUNCIL NSW SECRETARIAT OVERVIEW 2015

ADMINISTRATION

The Professional Teachers' Council NSW (PTC NSW) Administration team streamlined the range of professional services in 2015, ensuring continued quality of services to the PTC NSW Board of Directors and all member associations.

PTC NSW President Dr Denis Mootz and David Browne, PTC NSW Executive Officer, continue to explore viable options to relocate PTC NSW administration and member association tenants to permanent office accommodation. The use of a new facility would enable PTC NSW and its member associations to continue to deliver high quality professional development to teachers from all sectors.

The volume and variety of high quality, cost effective publications and graphic design work undertaken by PTC NSW on behalf of member associations and external entities continues to grow. These include association journals, bulletins and newsletters which are prepared for distribution as either a print publication and/or uploaded as digital content accessible to association members. PTC NSW launched an E-letter to help inform member associations of the work carried out by PTC NSW on behalf of association's members. The Department of Education kindly support the distribution of the E-letter via SchoolBiz reaching all NSW Department of Education teachers. The E-letter also seeks to highlight member associations through feature articles, capturing specific areas of interest or professional learning. Information content in all publications ranges from newsletters to full colour commercially produced publications. These publications are also made available in a format suitable for association websites.

Our reputation for cost effective quality design and layout has ensured a wider reach of clients through recommendation by associations in NSW and inter-state.

An increasing number of associations are utilising the PTC NSW secretariat to administer their conferences as a cost effective way to manage large events. The services include, but not limited to: sourcing venue options, caterers, and accommodation alternatives; advertising options; event registrations – including online registrations; sign-in clerical assistance on the day(s) of the event; design concepts for flyers, registration forms, banners, workbooks, programmes, name tags, signage and welcome screens.

TECHNOLOGY

Significant hardware and software upgrades in 2015 have assisted the secretariat through improved reliability and efficiencies.

PROFESSIONAL LEARNING

Professional learning opportunities continue to be made available to PTC NSW administration staff. The following is a summary for PL attended in 2015.

Mai Mai Lin (PTC NSW Accounts):

Australia Wide Taxation – Payroll training

Westpac – Financial management

Institute of Public Accountants – Understanding Financial Reports from a BAS Agent/Bookkeeper Perspective

Treasurer's Workshop – PTC NSW Auditor, Mr Terry Gibbs, Association members, PTC NSW President Dr Denis Mootz, PTC NSW Co-Vice President, Nerina Pretlove, members from the PTC NSW Board and PTC NSW Executive Officer, David Browne.

PTC NSW PROJECTS

The range of current PTC NSW projects include:

- (a) Continuing Global Education Project NSW funded by the Department of Foreign Affairs and Trade (DFAT).
- (b) Management of new and existing technology; on-going development and maintenance of the Association of Studies of Religion, Global Education MyScience (GEMS), Primary Teachers' Network, Australian Professional Teachers' Association (APTA), History Teachers' Association NSW, Drama NSW, and the Asia Education Teachers' Association websites
- (c) All aspects of PTC NSW Association work including: Board Meetings and Planning Days, Presidents' Dinner, Forums and Consultation sessions, The NSW Institute of Teachers/PTC NSW Professional Learning Committee Information feedback for member associations, two All Schools Fax streams, Semester 1 and Semester 2 Professional Development Calendars, support and assistance across a range of matters particular to individual associations.
- (d) Introduction of @PTC NSW, a communication from the President of PTC NSW to member association presidents' designed to inform and outline work carried across each semester, particularly outlining BOSTES and DoE meeting outcomes.
- (e) Professional Learning delivery model – PTCplus. The PTC NSW Board endorsed the trial of a new professional learning delivery model which will draw upon the expertise of all member associations and a selected number of non-curriculum consultants. The model will provide quality, teacher created, teacher delivered professional learning experiences for PTCplus registered schools, alongside the already excellent professional learning experiences carried out by member associations across NSW. Each PTCplus registered school will have the advantage of designing school based

professional learning experiences specifically for their school particularly targeting their needs. PTCplus will approach member associations to provide the tailored events utilising the member association's expertise. PTCplus will also be representing all member association's while working in schools further enhancing the profile and member advantages for all associations to teachers. PTCplus is an exciting innovation for PTC NSW that will provide cost effective, teacher created and presented quality professional learning directly with schools across all sectors and regions of NSW.

The support provided by PTC NSW has also assisted interest groups to formally establish new associations.

The Professional Casual Teachers Association NSW is a new association created to support all casual teachers across NSW. The creation of this association will assist casual teachers to have a combined forum as they prepare for their accreditation requirements from 2018. The Professional Casual Teachers Association NSW has a Board of management consisting of: Nerina Pretlove (President), Nikki Beaton (Vice-president), TBA (Hon. Secretary), Mai Mai Lin (Treasurer), David Browne (Committee member).

The focus of the PCTA NSW 2015/2016 is to provide access to quality, reasonable cost professional learning for casual teacher's across all sectors and across NSW. An on-line forum will be established to help link casuals across the state to each other and to provide a voice for teachers in a variety of casual and temporary positions in NSW Schools. Additional areas of support for future development included:

- online resources developed by teachers for teachers
- professional learning activities that provide ongoing opportunities for collaboration and support particularly around accreditation
- reach out to metropolitan, rural and regional areas, with tailored support
- initiate and maintained active development of social media with an focus on Facebook and Twitter

The recent Great Teaching, Inspired Learning – A blueprint for action Forum was well attended by member associations. Mr Tom Alegounarias, President of the Board of Studies, Teaching and Educational Standards NSW (BOSTES) addressed several issues the Board is currently working through including: Defining who is a teacher; Accreditation for all teachers, which will effectively be a recognition process and that once accredited, all teachers will be required to maintain that accreditation through professional learning. This obligation has been designed to ensure that all teachers engage in their schools, on a professional level with their peers and executives about their professional learning and an opportunity for teachers to ask schools for professional learning experiences both from within their schools and externally, which is timely and around particular needs; Initial Teacher Education with the fundamental issue that as of 2015 to be eligible to enter a teacher training course you must have achieved at least 3 Band 5's with one of those being English at HSC level, BOSTES is looking at equity and alternate pathways which may provide access to teacher education courses;

Students practicum is also being reviewed, including audits of literacy, online – learning and classroom management; Measuring student outcomes; BOSTES has also begun looking at how universities prepare teachers to teach students in the areas of numeracy, indigenous education and the capacity of teachers to analyse student data and to program on the basis of that data: GTIL will also assist the process of developing professional learning experiences responding to teacher needs.

PTC NSW President Dr Denis Mootz thanked Tom for his time and his frank discussion with us.



2015 PRESIDENTS' DINNER

The 21st Annual Presidents' Dinner was held on Wednesday 27 May 2015. This event, as in past years, was well supported by the presidents of the Professional Teachers' Council NSW (PTC NSW) Member Associations as it provides a valuable opportunity for the profession to meet and develop professional ties with the other member associations in a collegial social setting.

PTC NSW 2015 Presidents' Dinner guest speaker Dr Roslyn Arnold

Dr Denis Mootz, President PTC NSW welcomed dignitaries and guests attending this important dinner event. Guests included: Mr Miles Campbell – Director: Teacher Training Australia, Mr Paul Martin – Executive Director, Teaching Standards and Strategic Policy: Board of Studies, Ms Liz Germani – CEO and Education Manager: Teacher Training Australia, Mr Paul Rodney – Assistant Director Education Programs: Catholic Education Commission NSW, Ms Amy Cotton – IEU Officer: Independent Education Union, Ms Allison Pegus – Professional Learning Manager for Onsite Services: Teacher Training Australia, Bronwyn Ridgway – Journalist: Independent Education Union, Kathy Deacon – Director of the Centre for Professional Learning: NSW Teachers Federation, Gary Zadkovich – Deputy President: NSW Teachers Federation, Mr Matthew Bentley – Past President: Professional Teachers' Council NSW, Ms Dorothy Hoddinott – Past President: Professional Teachers' Council, Terry Gibbs – Auditor: TE Gibbs & Co Pty Ltd, Mr Patrick Lee – GTIL.

The President, Dr Denis Mootz acknowledged the vital role that associations play in the professional development and support of teachers across NSW.

The guest speaker for the evening was Dr Roslyn Arnold and spoke on 'What is Empathic Intelligence?'

Empathic intelligence is a theoretical concept (Arnold, 1993, 1994a, 1994b, 1994c, 1998) underpinned by an argument that effective pedagogy and educational therapy happens when a practitioner is able to create a dynamic, or energy, between thinking and feeling, in a context which is perceived as intelligently caring.

Empathic intelligence is a sophisticated form of empathy in action. It is a sustained system of psychic, cognitive, affective, social and ethical functioning derived from ability to:

- differentiate self-states from others' states
- mobilise a dynamic between thinking and feeling in self and others
- engage in imaginative, reflective and analogic processes to understand dynamics
- work creatively in tacitly felt, but yet unrealized ways, guided by resilience and adaptive capacity
- commit to the well-being and development of self and others
- generate a climate of care in contexts of practice

Empathically intelligent practitioners demonstrate a number of qualities, attributes, predispositions and abilities, in particular those which contribute to enthusiasm, capacity to engage others, expertise and empathy. Such practitioners are sensitive to the function of attunement and mirroring as affirmation and a means of modulating response.

Empathic intelligence (Arnold, 1993, 1994a, 1994b, 1994c, 1998, 2004, 2005) was formulated to articulate some complex qualities of effective pedagogy (teaching and learning) and to mobilise those practitioners who demonstrate its characteristics and gain affirmation from its articulation. They can use the theory of empathic intelligence to deepen their self-understanding as practitioners and through observation and introspection, shape its elaborations to enliven their practices.

TREASURERS' WORKSHOP

On Monday 27 April 2015 the Professional Teachers' Council NSW held a Practical Treasures' Workshop for member associations. During the three hour workshop participants were introduced to the concepts of compliance around a treasure's responsibilities and why it's essential for organisations to have clear processes around how they monitor and report their finances. The information was particularly useful for newly appointed association treasurers.

NSW BOARD OF STUDIES BOARD, TEACHING AND EDUCATIONAL STANDARDS (BOSTES) CONSULTATION COMMITTEES (BCC)

The Professional Teachers' Council NSW appreciates the BOSTES invitation for representatives of member associations to participate in the important work undertaken by the BOSTES Board Curriculum Committees.

David Browne
Executive Officer
PTC NSW

PTC NSW ANNUAL AWARDS

EXCEPTIONAL SERVICE AWARD

The Exceptional Service Award is presented to people for their distinguished service over a significant period of time to the Professional Teachers' Council NSW, member professional associations and education in NSW. President of the NSW Board of Studies, Mr Tom Alegounarias presented these awards to the following recipients.



2014 RECIPIENTS

Ailsa Holmes-Walker

Carol Taylor

OUTSTANDING PROFESSIONAL SERVICE AWARD 2014 RECIPIENTS

Kelly Bell, Australian Council for Health, Physical Education and Recreation

Kim Harper, Australian Council for Health, Physical Education and Recreation

Jennifer Curtis, Asia Education Teachers' Association

Diane Hughes, Australian Society for Music Education NSW

Heather Powell, Classical Languages Teachers' Association Inc

Milton Brown, Geography Teachers' Association of New South Wales

Leila Achmad, History Teachers' Association of New South Wales

Dennis Lendon, History Teachers' Association of New South Wales

Denise De Paoli, Marine Teachers' Association of NSW

Pete Rundle, Mathematical Association of New South Wales

Georgina Doukas, Modern Language Teachers' Association of NSW

Meagan Gadd, NSW PDHPE Teachers' Association

Michelle Rollins, Orff Schulwerk Association NSW Inc

Stuart Garth, Science Teachers' Association of New South Wales

Joanne Sim, Society and Culture Association NSW

Maxine Johnson, Society and Culture Association NSW

Denise Perrin, Visual Arts and Design Educators' Association NSW

AFFILIATE MEMBER CATEGORY:

Jennifer Samild, Kodály Music Education Institute of Australia (NSW)



Professional Teachers' Council NSW, 56 Bland Street Ashfield NSW

- PO Box 577 Leichhardt NSW 2040 • Phone 02 9716 0378 • Fax 02 9564 2342
- Email admin@ptc.nsw.edu.au • Web www.ptc.nsw.edu.au